

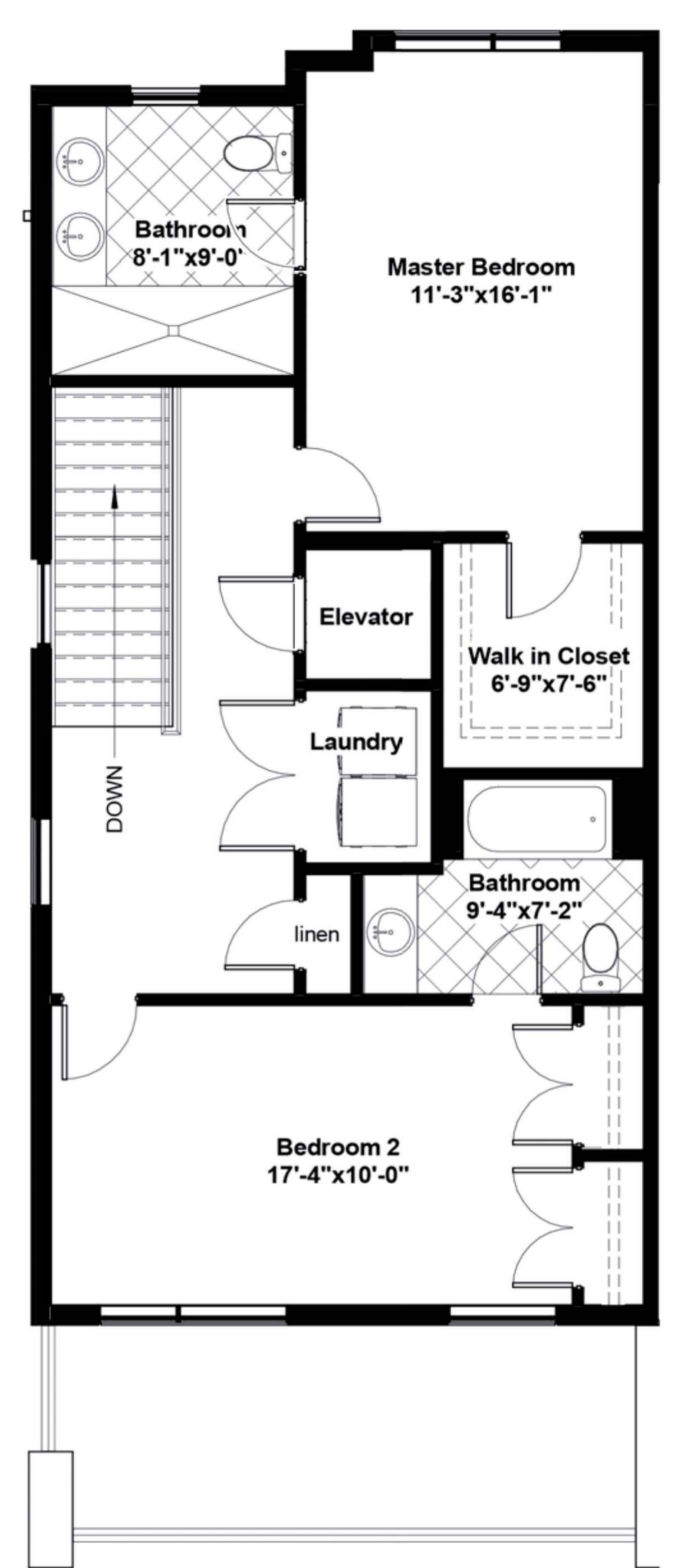
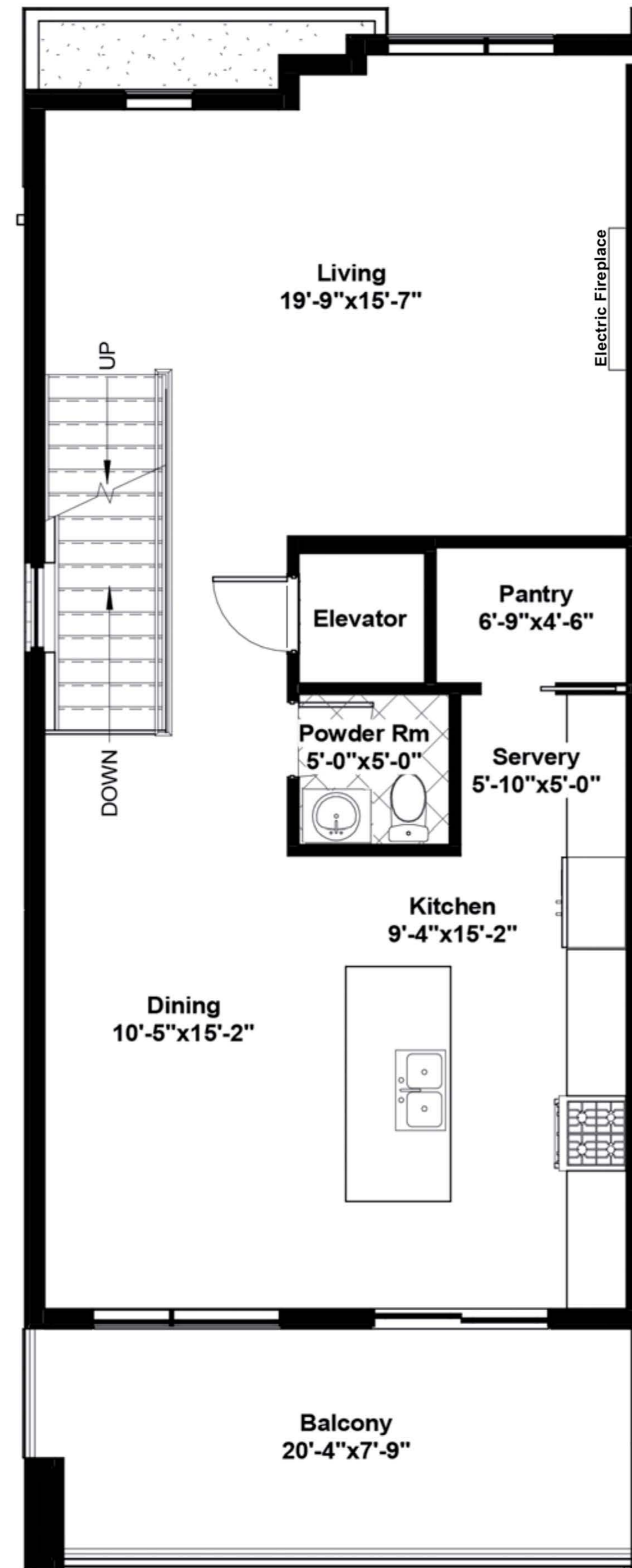
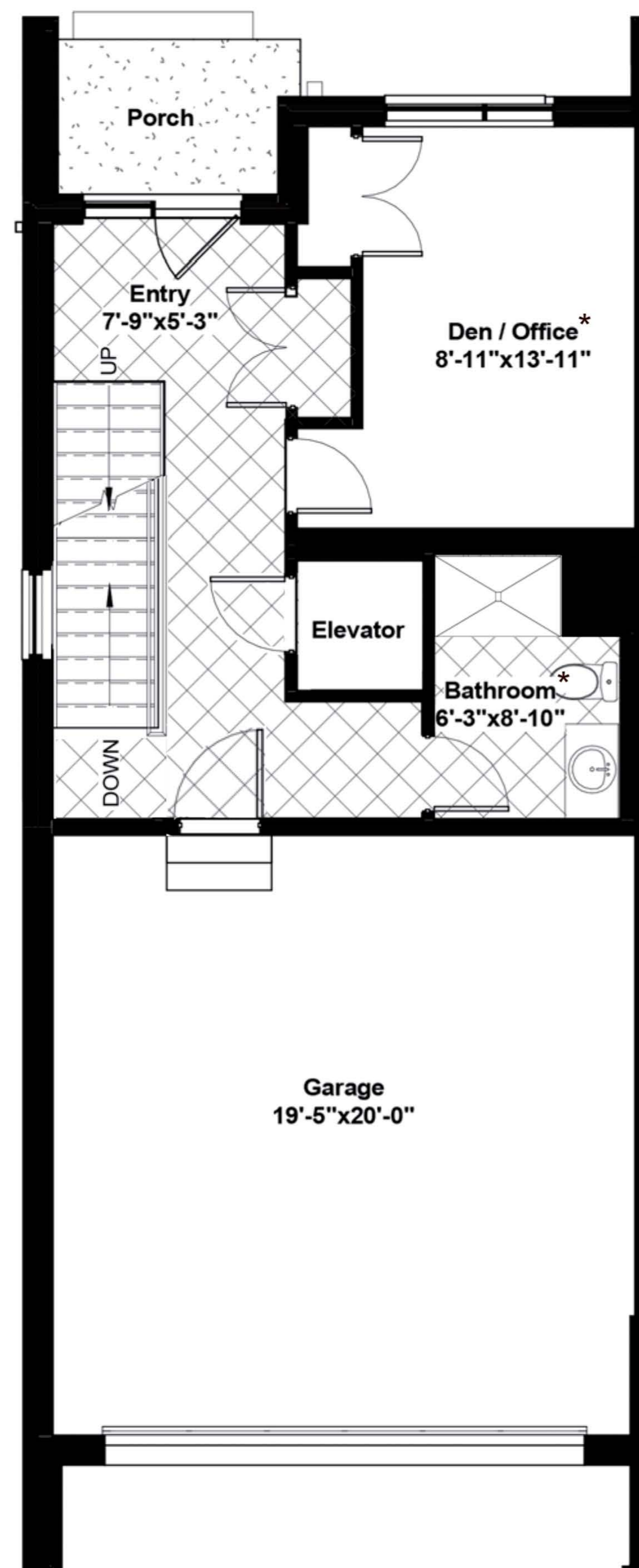
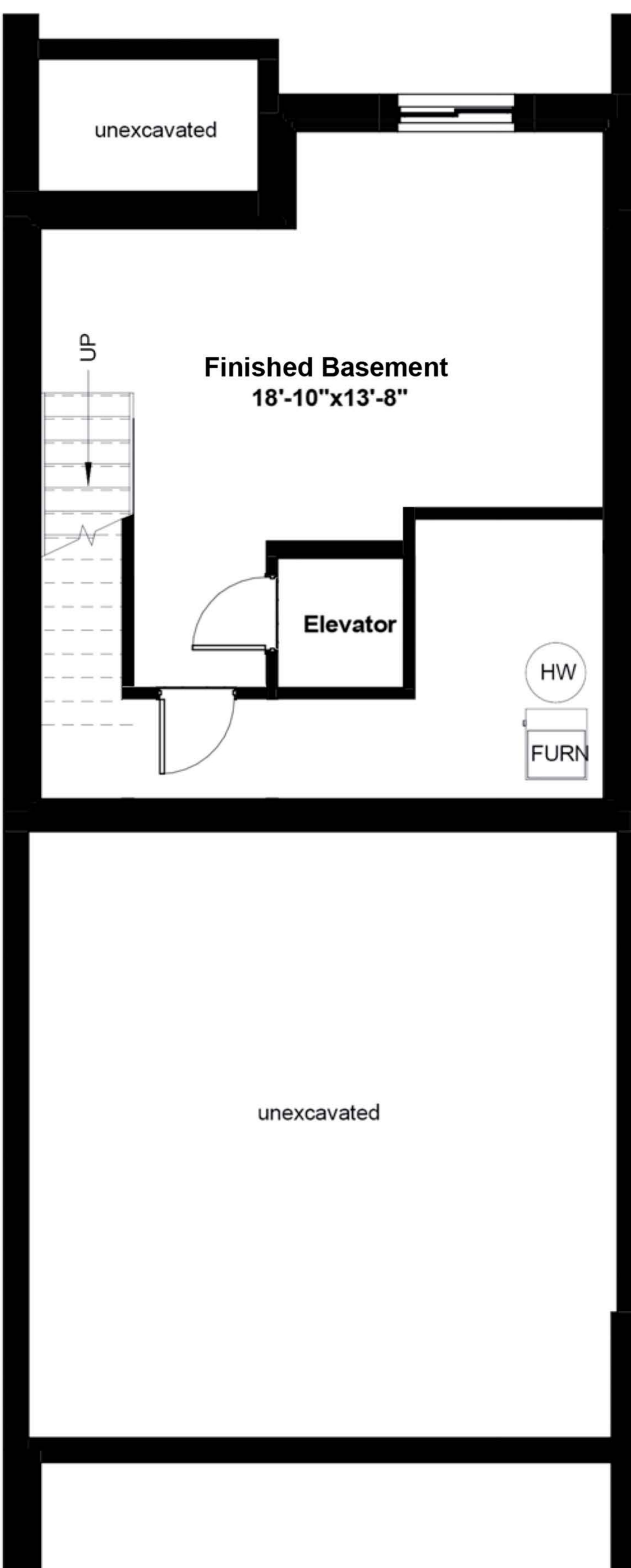
2366 sq ft of Finished Living Space

2131 SQ FT PLUS 235 SQ FT OF FINISHED BASEMENT



FEATURES

- 3-storey condo town
- 2 bed + den, 3.5 bath
- Private elevator
- Quartz ctops in kitchen & baths
- 77" electric fireplace
- Fisher & Paykel appliances
- Motorized window coverings
- 2nd floor terrace
- Full landscape package



0% MORTGAGE FINANCING for 3 YEARS\*

\*Available for qualified buyers. Terms and conditions apply. See sales rep for details.

FULL PRICE

\$1,151,260

BUILDER DISCOUNT

\$21,360

SALE PRICE

\$1,129,900

ENHANCED HST REBATE

\$106,000

NEW PRICE

\$1,023,900\*\*

\*\*Prices subject to change at the builder's discretion without notice. E. & O.E.

**2366 sq ft of Finished Living Space**  
**2131 SQ FT PLUS 235 SQ FT OF FINISHED BASEMENT**



**BASE PRICE (incl net HST)**

**\$1,099,900**

**READY BY RINALDI UPGRADE PACKAGE**

**\$51,360**

Plumbing and HVAC Upgrades

Upgrades as per order from The Ensuite

Electrical and Lighting Upgrades

Light fixtures above standard allowance

Stair Upgrades

Stainless Steel spindles (Prince series, square)

Kitchen, Bathroom and Laundry Room Cabinetry Upgrades

Kitchen:

Increase counter thickness of island to 2 1/2"  
 Higher than standard level of quartz  
 Flat panel cabinetry pilasters on sides of island - depth to match countertop  
 Panelled fridge and dishwasher and hardware  
 Change servery area to bar fridge (cr) and bank of 3 drawers  
 Cabinetry hood, box style, flip up, flat panel front

Powder Room:

Countertop 3" with integrated quartz sink, includes wider vanity up to corner

Flooring Upgrades

Upgrade foyer, front hallway and ground floor bathroom floor to Impact series matte 24"x24" tile. Installed in a straight stacked format running horizontally in from the entrance  
 Upgrade ground floor shower walls, shower curb & shower floor (envelope cut) to Impact series 24"x24" tile. Installed in a straight stacked format running horizontally up the walls.

Other Upgrades

Add appliance package which includes the following appliances:

- Fisher & Paykel 36" french door fridge - stainless steel
- Fisher & Paykel 36" induction range - stainless steel
- Fisher & Paykel 24" built-in dishwasher - stainless steel
- Electrolux front load washer
- Electrolux front load dryer - electric
- Hoses - steam set with 4 hoses

Kitchen island stools (4)

Paint unfinished area of the basement floor with 2 coats of MF epoxy/acrylic floor paint. Semi gloss (pre-mixed grey) - mechanical room  
 Add mirror to the ground floor bathroom, 2pce powder room and 3pce bath in Bedroom 2 and Ensuite.

For more information contact our sales team at 905 688 1283 | sales@rinaldihomes.com | rinaldihomes.com



**0% MORTGAGE FINANCING for 3 YEARS\***

\*Available for qualified buyers. Terms and conditions apply. See sales rep for details.

FULL PRICE	BUILDER DISCOUNT	SALE PRICE	ENHANCED HST REBATE	NEW PRICE
\$1,151,260	\$21,360	\$1,129,900	\$106,000	\$1,023,900**

\*\*Prices subject to change at the builder's discretion without notice. E. & O.E.