

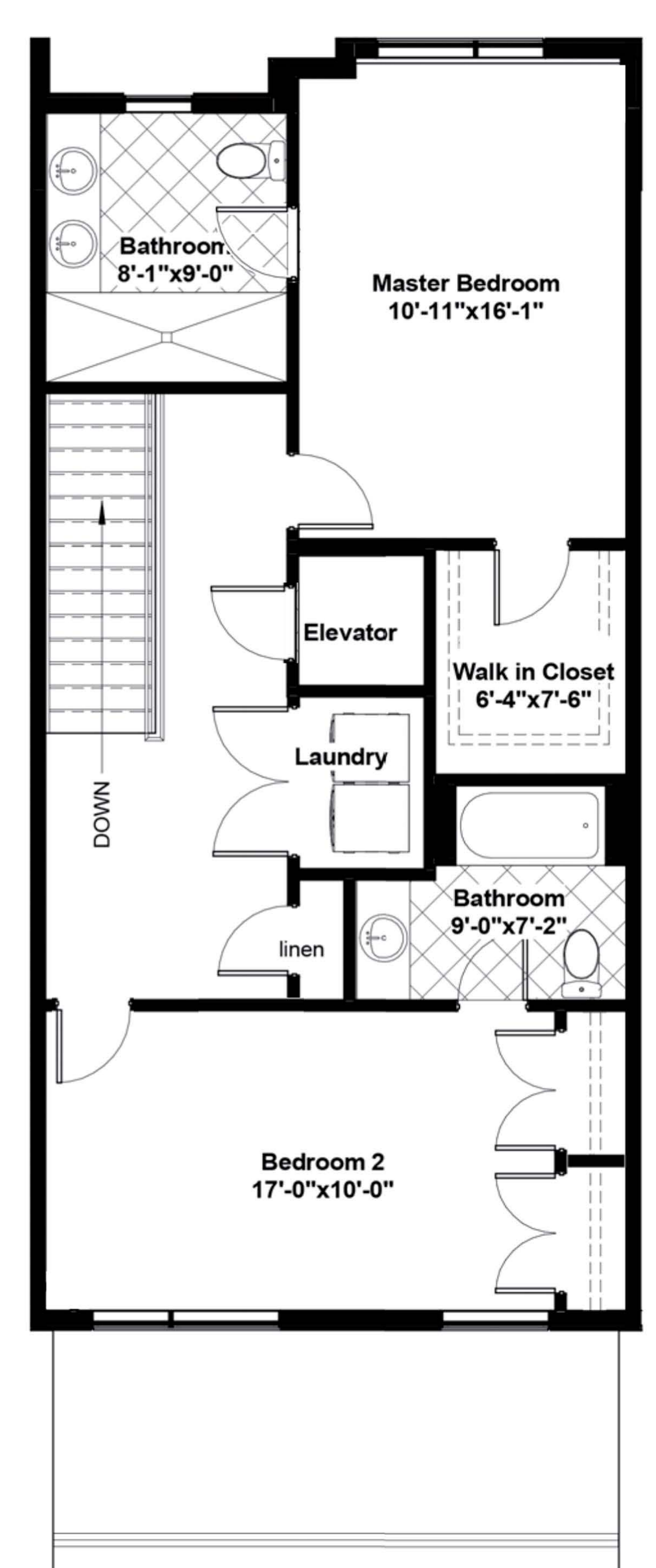
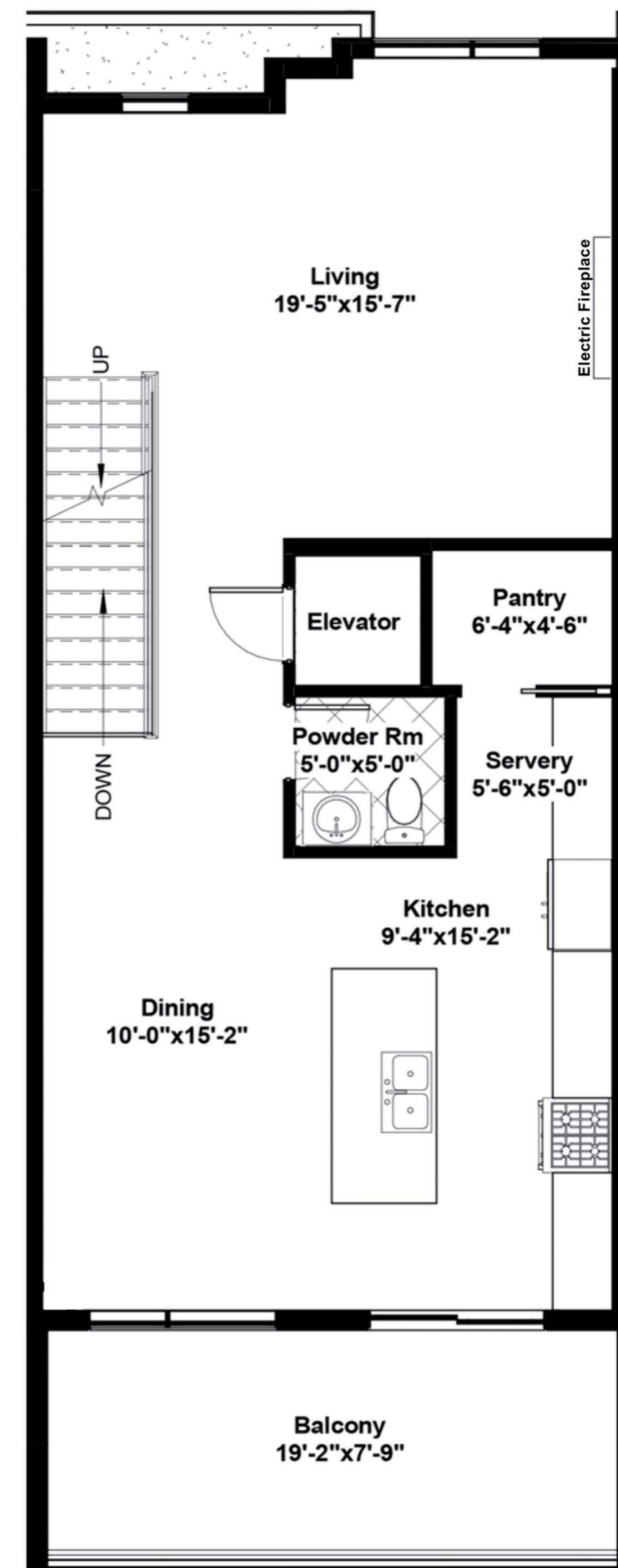
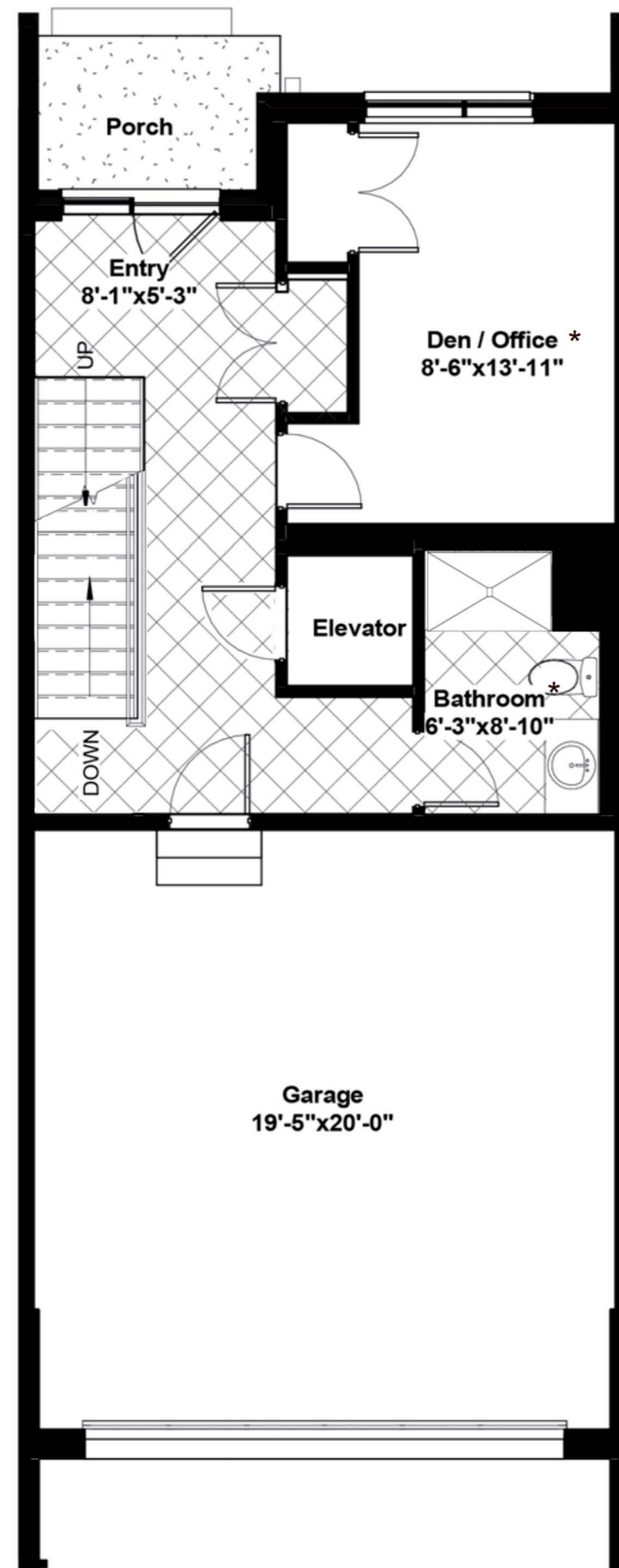
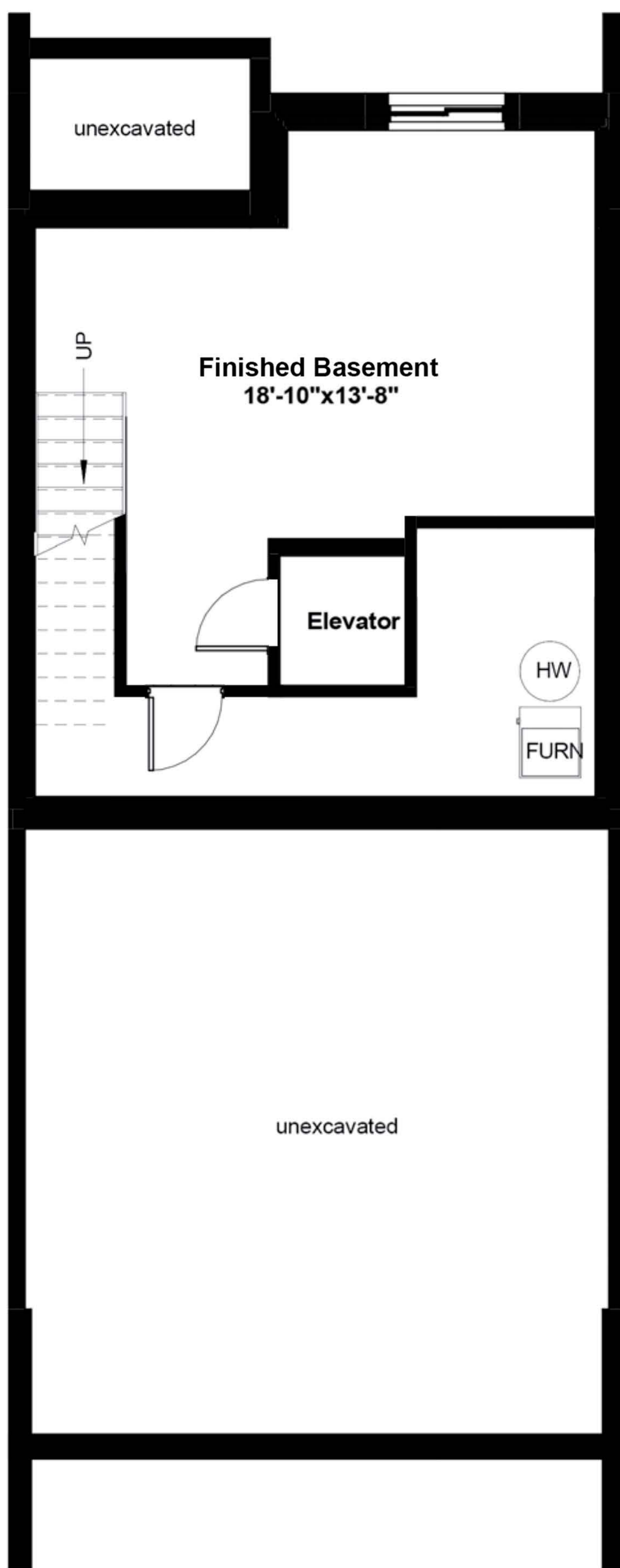
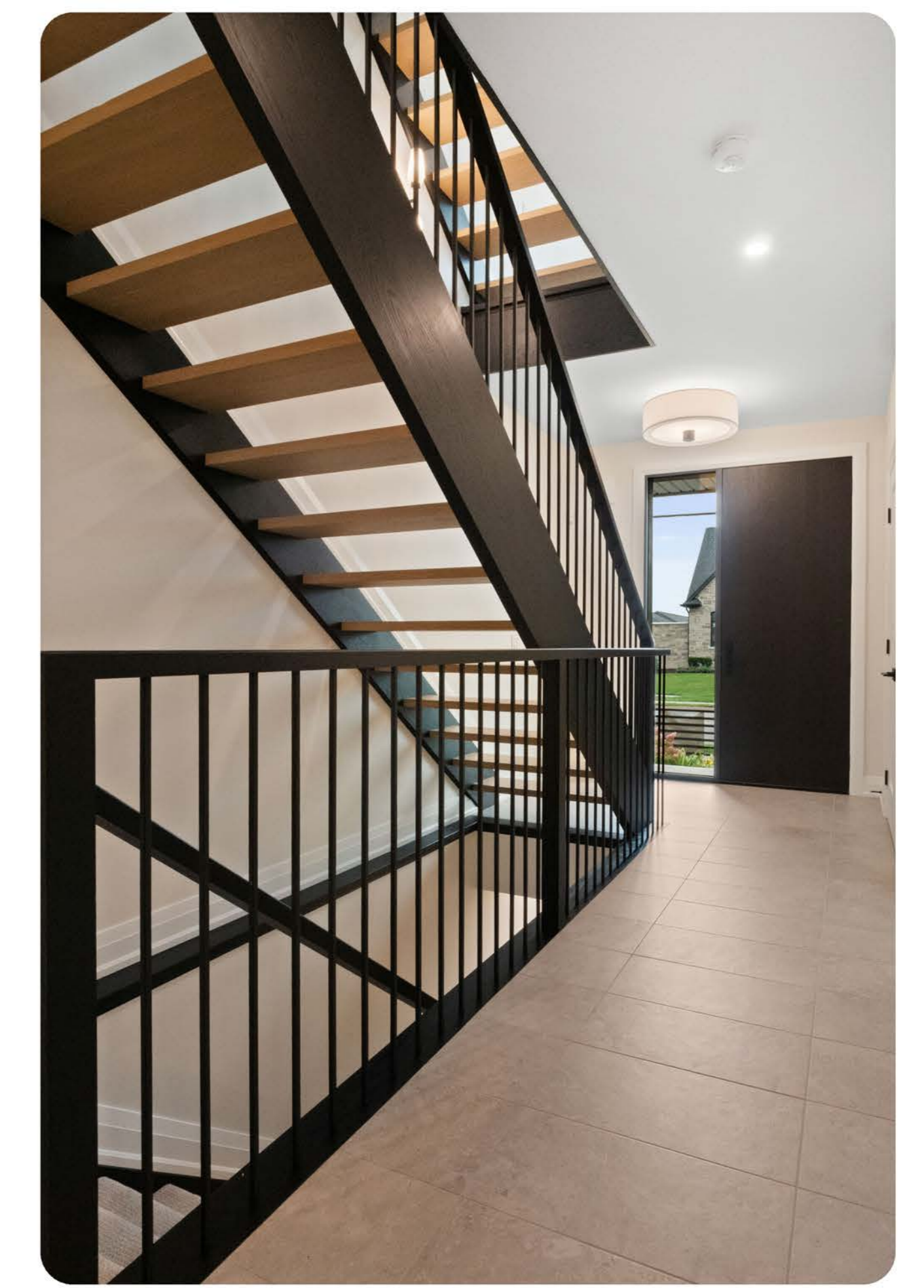
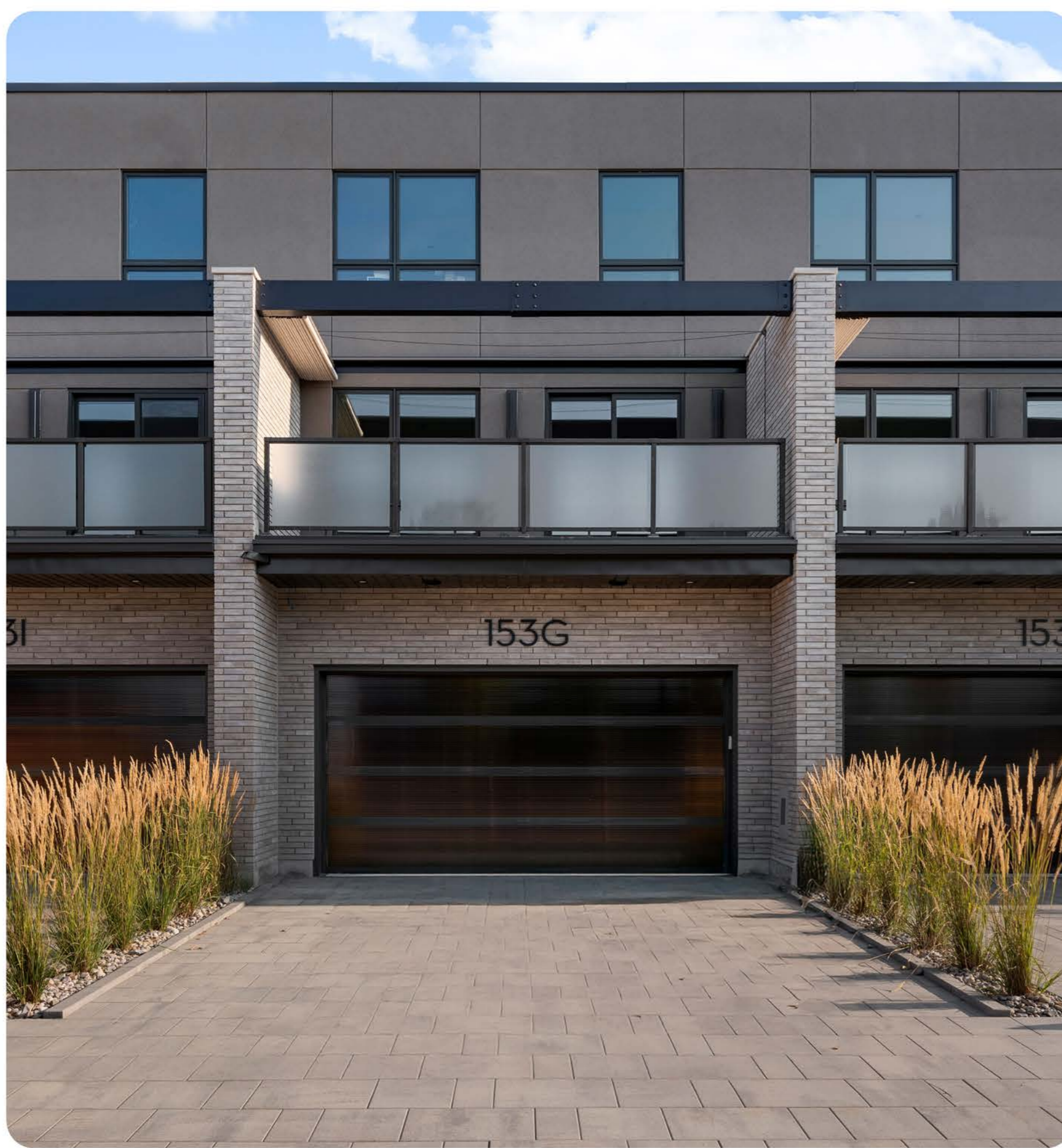
2314 sq ft of Finished Living Space

2077 SQ FT PLUS 237 SQ FT OF FINISHED BASEMENT



FEATURES

- 3-storey condo town
- 2 bed + den, 3.5 bath
- Private elevator
- Quartz ctops in kitchen & baths
- 77" electric fireplace
- Fisher & Paykel appliances
- Motorized window coverings
- SMART home system
- Full landscape package



0% MORTGAGE FINANCING for 3 YEARS*

*Available for qualified buyers. Terms and conditions apply. See sales rep for details.

FULL PRICE

BUILDER DISCOUNT

SALE PRICE

ENHANCED HST REBATE

NEW PRICE

\$1,042,049

\$42,149

\$999,900

\$93,794

\$906,106**

**Prices subject to change at the builder's discretion without notice. E. & O.E.

2314 sq ft of Finished Living Space

2077 SQ FT PLUS 237 SQ FT OF FINISHED BASEMENT



BASE PRICE (incl net HST)

\$999,900

READY BY RINALDI UPGRADE PACKAGE

\$42,149

Plumbing and HVAC Upgrades

Upgrade to black finish on kitchen faucet
Upgrade to black finish on powder room faucet

Electrical and Lighting Upgrades

Light fixtures above standard allowance

Kitchen, Bathroom and Laundry Room Cabinetry Upgrades

Kitchen:

Increase counter thickness of island to 2 1/2"
2 island waterfalls at 2 1/2" thick
Panel doors on fridge & dishwasher and hardware

Powder room:

Powder Room countertop 3" with integrated quartz sink, includes wider vanity up to corner

Flooring Upgrades

Powder Room: 3" Hexagon tile floor (satin colour Nero Marquina). Grout is charcoal
Ensuite Shower: Back wall only - 2.5"x 7.8" Accent tile "Vibe" (matte) colour Grey, installed in a vertical stacked format
Kitchen Backsplash: Icon rectified stripe 0.5" x 6" tile, colour Gun Powder, installed in a vertical stacked format

Other Upgrades

Add appliance package which includes the following appliances:

- Fisher & Paykel 36" french door fridge - stainless steel
- Fisher & Paykel 36" gas range - stainless steel
- Fisher & Paykel 24" built-in dishwasher - stainless steel
- Electrolux front load washer
- Electrolux front load dryer - electric
- Hoses - steam set with 4 hoses

Kitchen island stools (4)

Add quartz surround to electric fireplace & painted MDF mitred sides to fireplace boxout
Paint accent walls a dark value paint colour 'Iron Ore' SW 7069 (fireplace bumpout walls & primary bedroom headboard wall)
Paint unfinished area of the basement floor with 2 coats of MF epoxy/acrylic floor paint. Semi gloss (pre-mixed grey) - mechanical room
Add mirror to the ground floor bathroom, 2pce powder room and 3pce bath in Bedroom 2 and Ensuite.

For more information contact our sales team at 905 688 1283 | sales@rinaldihomes.com | rinaldihomes.com



0% MORTGAGE FINANCING for 3 YEARS*

*Available for qualified buyers. Terms and conditions apply. See sales rep for details.

FULL PRICE
\$1,042,049

BUILDER DISCOUNT
\$42,149

SALE PRICE
\$999,900

ENHANCED HST REBATE
\$93,794

NEW PRICE
\$906,106**

**Prices subject to change at the builder's discretion without notice. E. & O.E.