

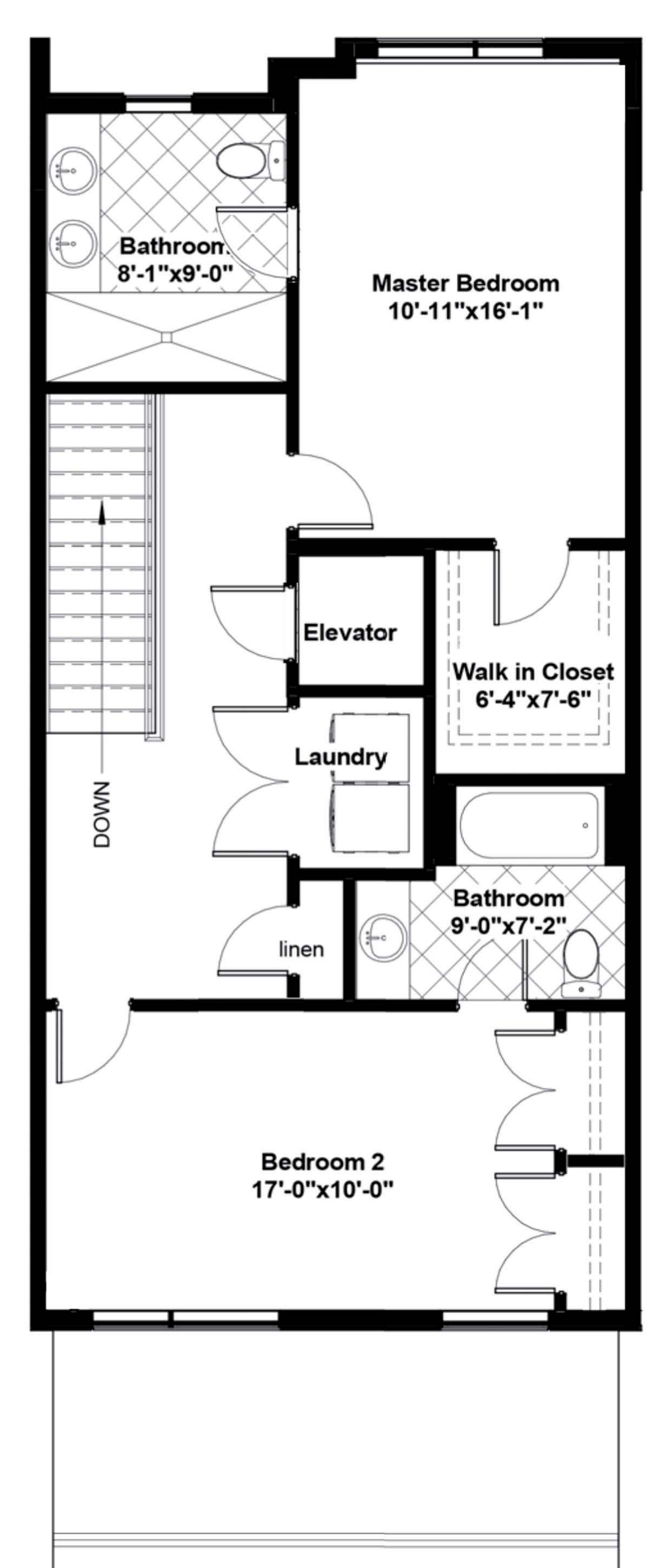
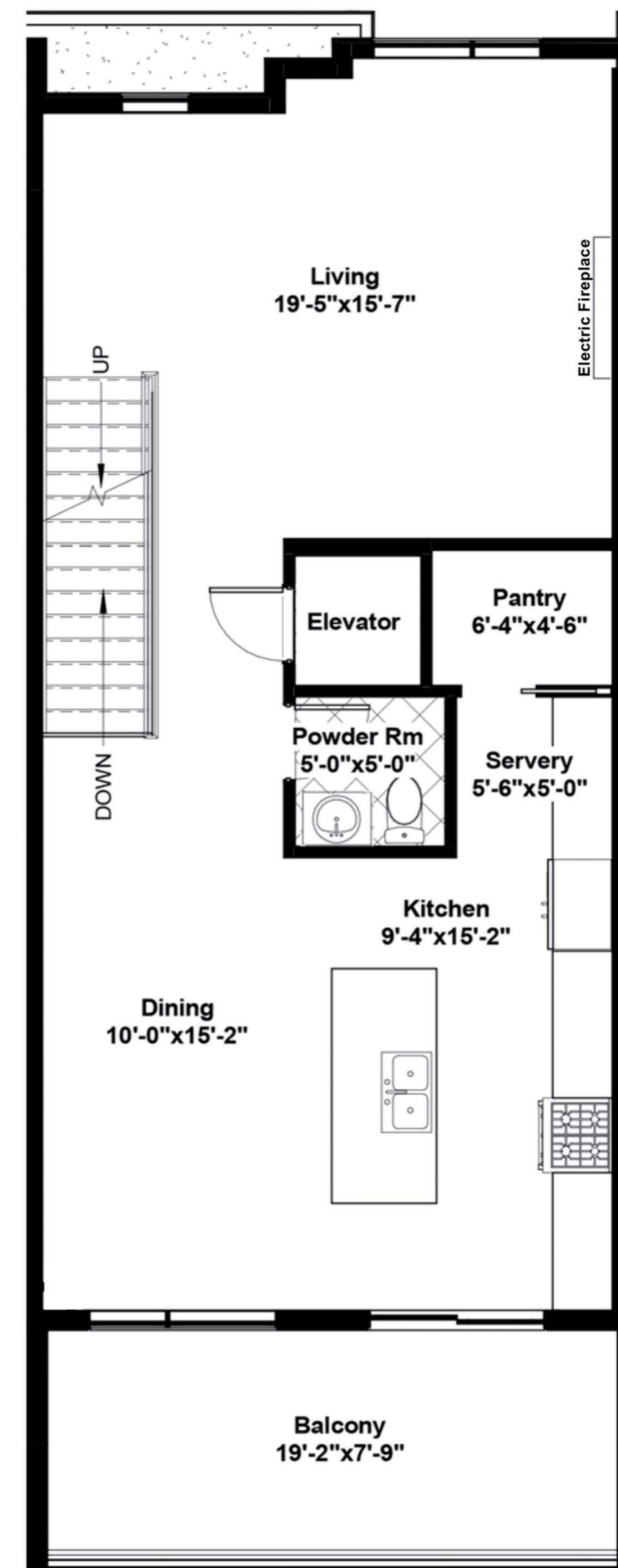
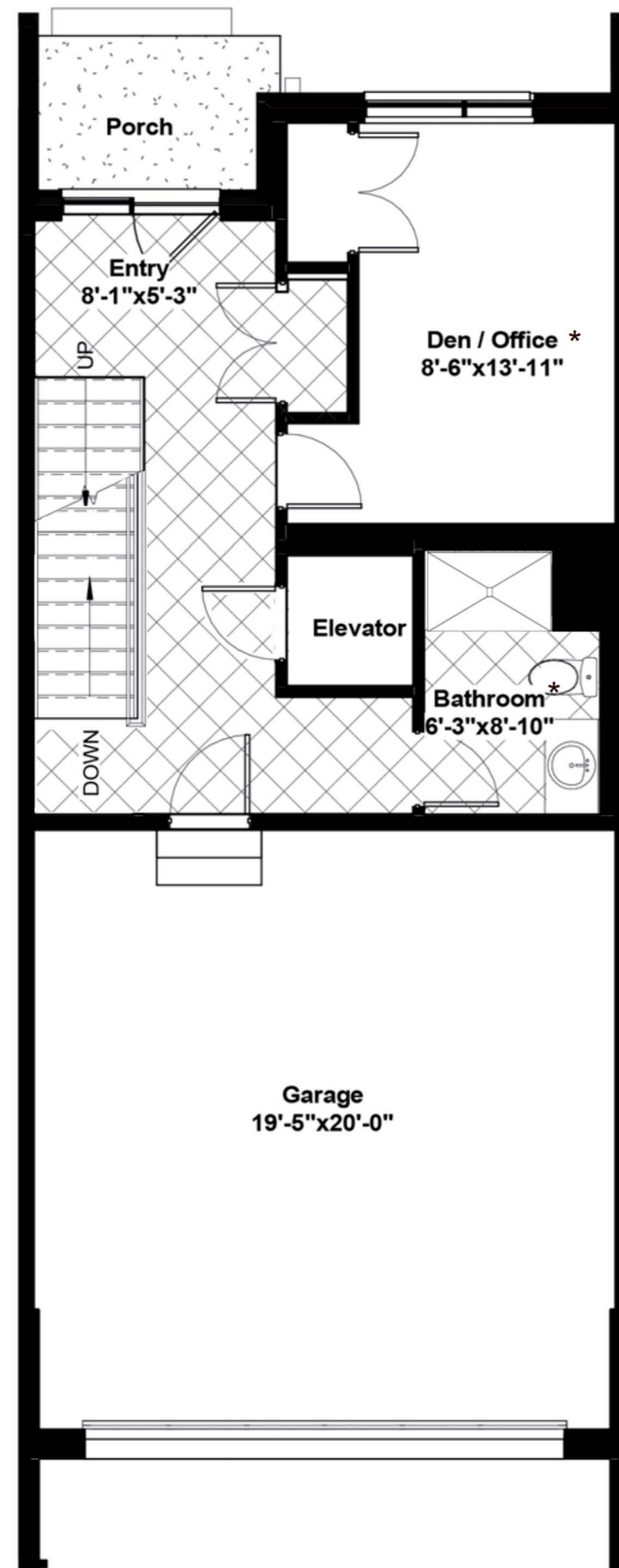
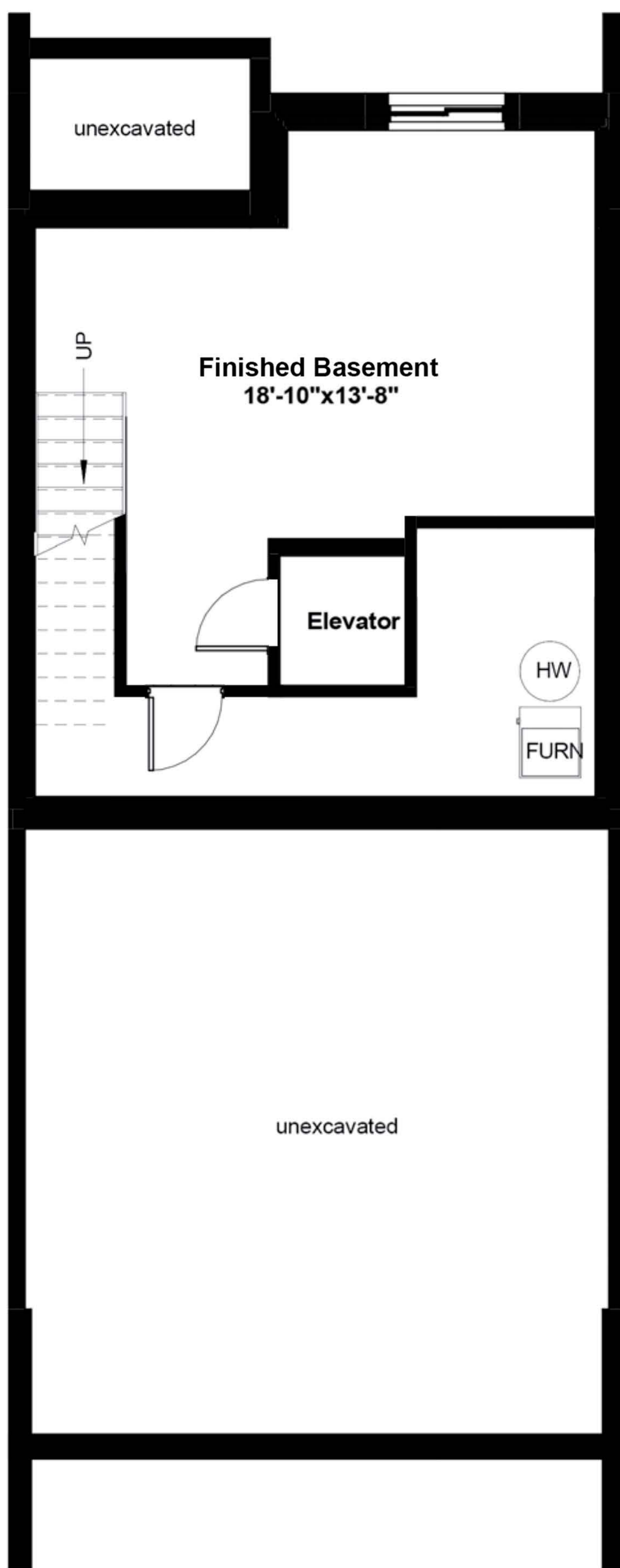
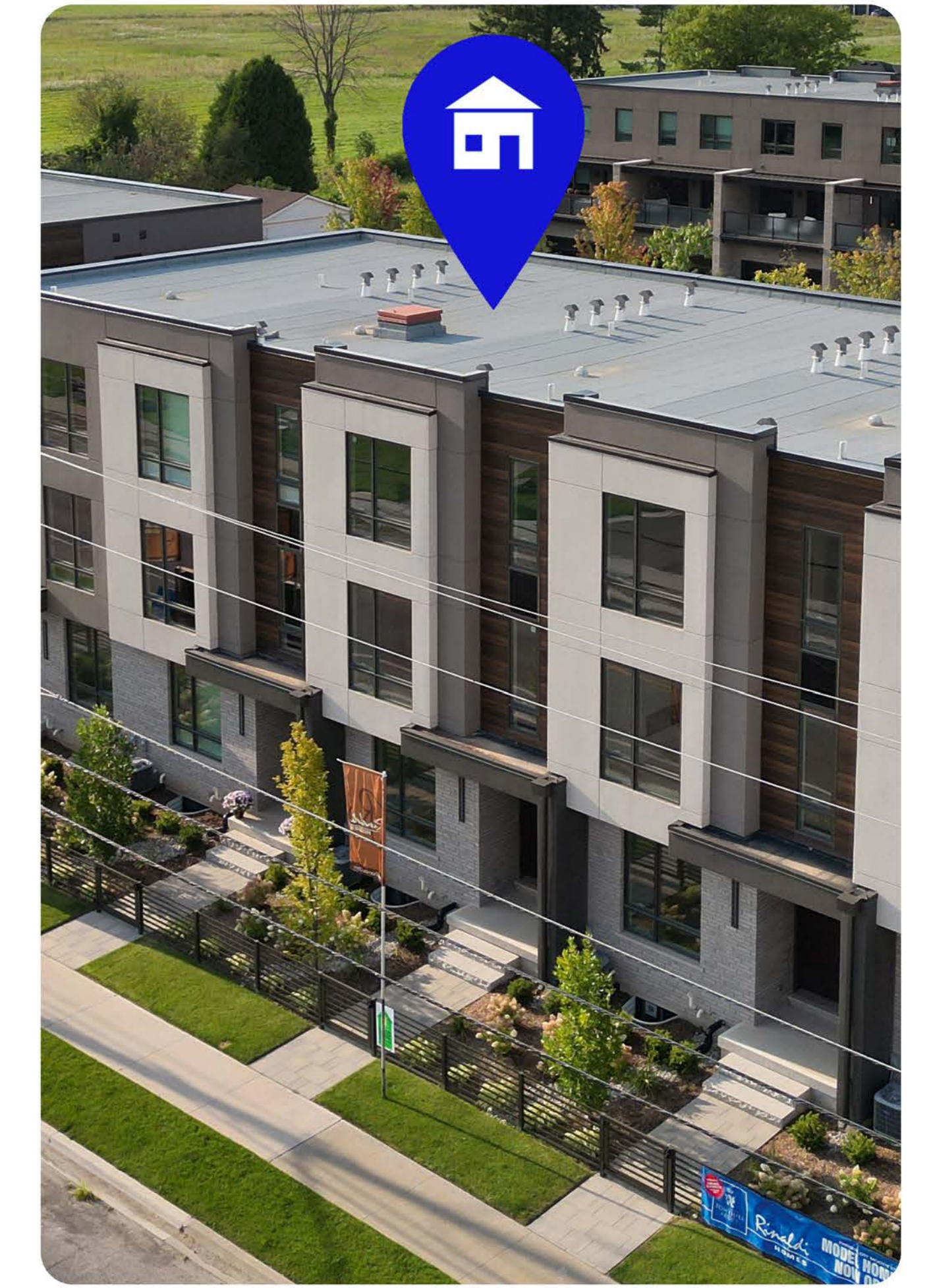
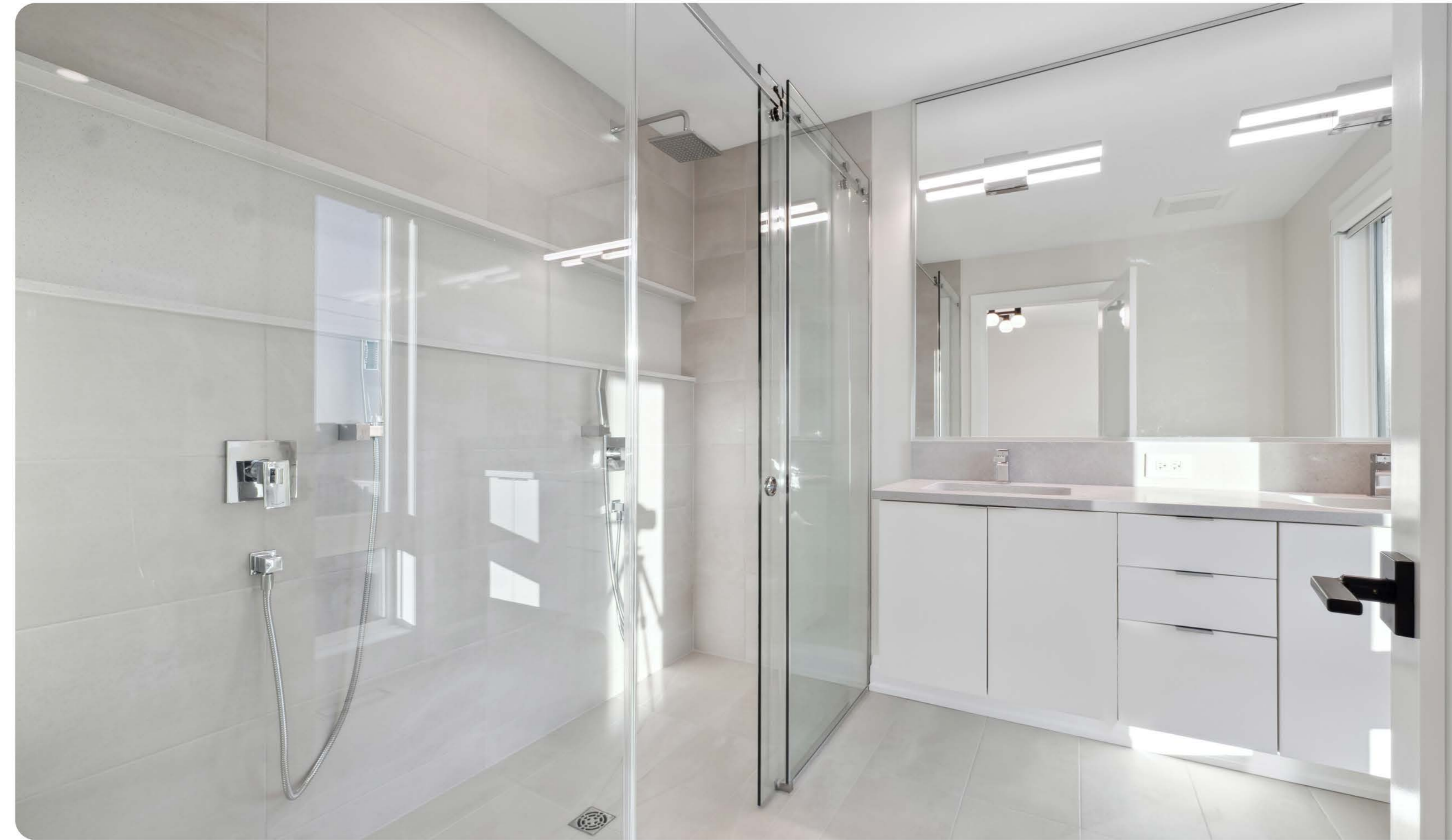
2314 sq ft of Finished Living Space

2077 SQ FT PLUS 237 SQ FT OF FINISHED BASEMENT



FEATURES

- 3-storey condo town
- 2 bed + den, 3.5 bath
- Private elevator
- Quartz ctops in kitchen & baths
- 77" electric fireplace
- Fisher & Paykel appliances
- Motorized window coverings
- 2nd floor terrace
- Full landscape package



0% MORTGAGE FINANCING for 3 YEARS\*

\*Available for qualified buyers. Terms and conditions apply. See sales rep for details.

FULL PRICE  
\$1,038,314

BUILDER DISCOUNT  
\$38,415

SALE PRICE  
\$999,900

ENHANCED HST REBATE  
\$93,794

NEW PRICE  
\$906,106\*\*

\*\*Prices subject to change at the builder's discretion without notice. E. & O.E.

## 2314 sq ft of Finished Living Space

2077 SQ FT PLUS 237 SQ FT OF FINISHED BASEMENT



BASE PRICE (incl net HST)

\$999,900

READY BY RINALDI UPGRADE PACKAGE

\$38,415

Plumbing and HVAC Upgrades

Upgrades as per order from The Ensuite

Electrical and Lighting Upgrades

Light fixtures above standard allowance

Kitchen, Bathroom and Laundry Room Cabinetry Upgrades

Increase counter thickness of island to 2 1/2"

2 island waterfalls at 2 1/2" thick

Panel doors on fridge & dishwasher and hardware

Powder Room countertop 3" with integrated quartz sink, includes wider vanity up to corner

Flooring Upgrades

Powder Room: Tex pattern Natural 24" x 24" tile, colour: Tex Ivory, installed in a straight stacked format.

Kitchen Backsplash: Mixing 75% of Confetto plain 2" x 6" colour: Mattone with 25% of Confetto Struttura décor 2" x 6" colour Mattone, installed in a vertical stack format throughout.

Other Upgrades

Add mirror to the ground floor bathroom, 2pce powder room and 3pce bath in Bedroom 2 and Ensuite.

Paint unfinished area of the basement floor with 2 coats of MF epoxy/acrylic floor paint. Semi gloss (pre-mixed grey) - mechanical room

Add appliance package which includes the following appliances:

Fisher & Paykel 36" french door fridge - panel ready

Fisher & Paykel 36" gas range - stainless steel

Fisher & Paykel 24" built-in dishwasher - panel ready

Electrolux front load washer - Titanium finish

Electrolux front load electric dryer - Titanium finish

Hoses - steam set with 4 hoses

For more information contact our sales team at 905 688 1283 | sales@rinaldihomes.com | rinaldihomes.com



**0% MORTGAGE FINANCING for 3 YEARS\***

\*Available for qualified buyers. Terms and conditions apply. See sales rep for details.

FULL PRICE  
**\$1,038,314**

BUILDER DISCOUNT  
**\$38,415**

SALE PRICE  
**\$999,900**

ENHANCED HST REBATE  
**\$93,794**

NEW PRICE  
**\$906,106\*\***

\*\*Prices subject to change at the builder's discretion without notice. E. & O.E.