

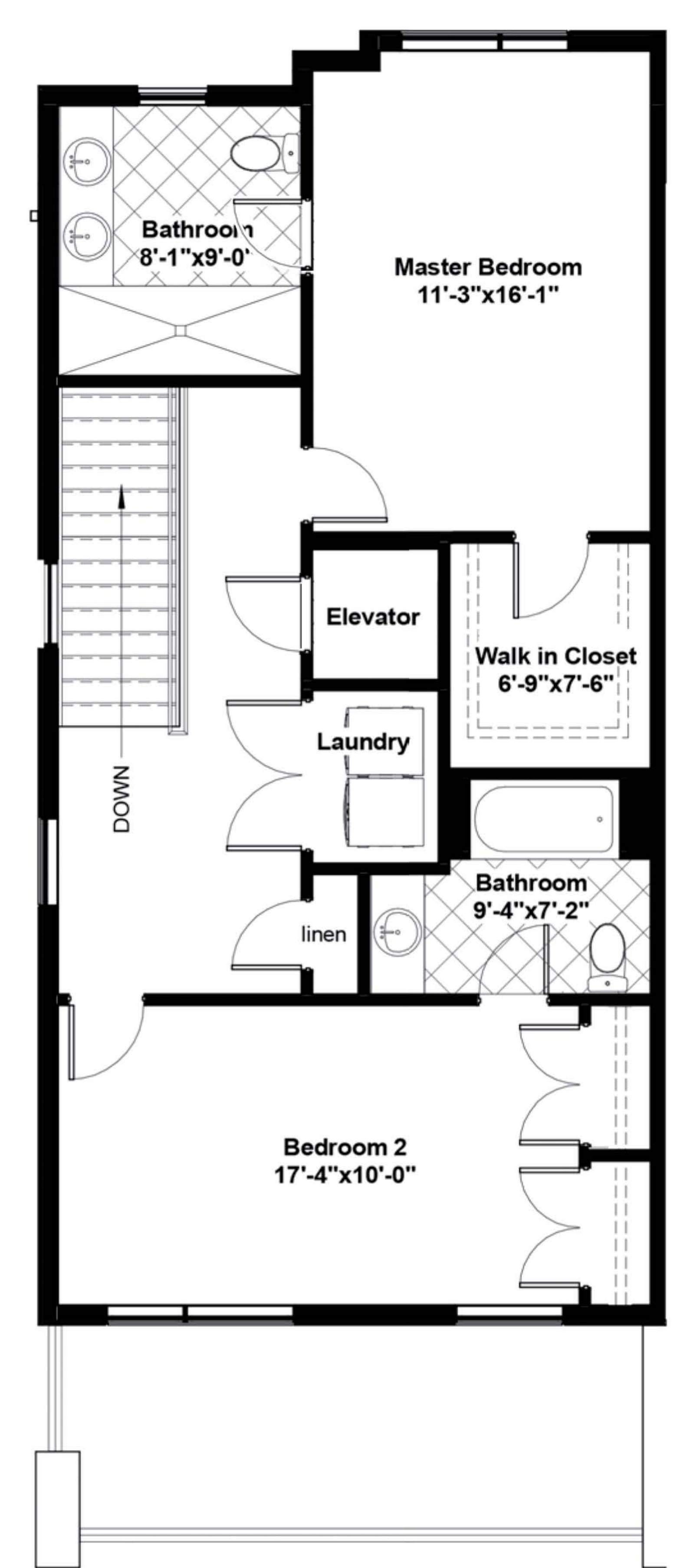
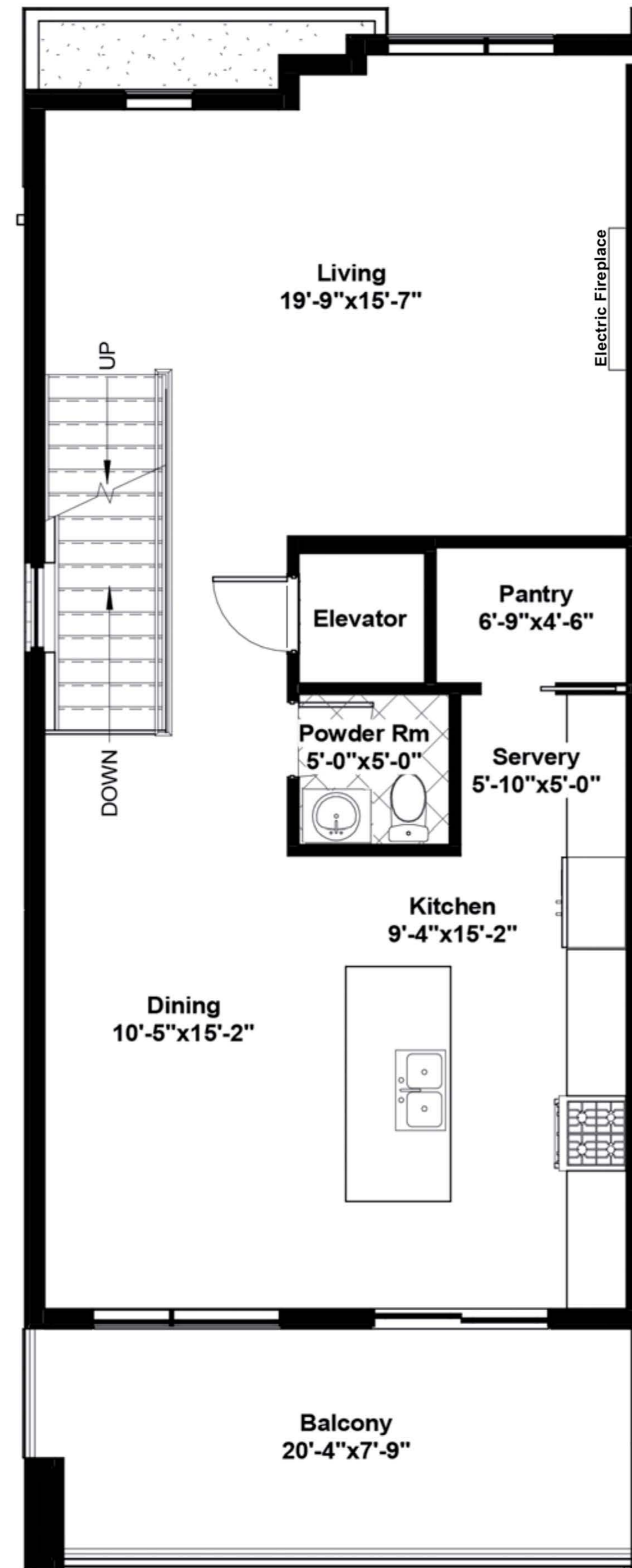
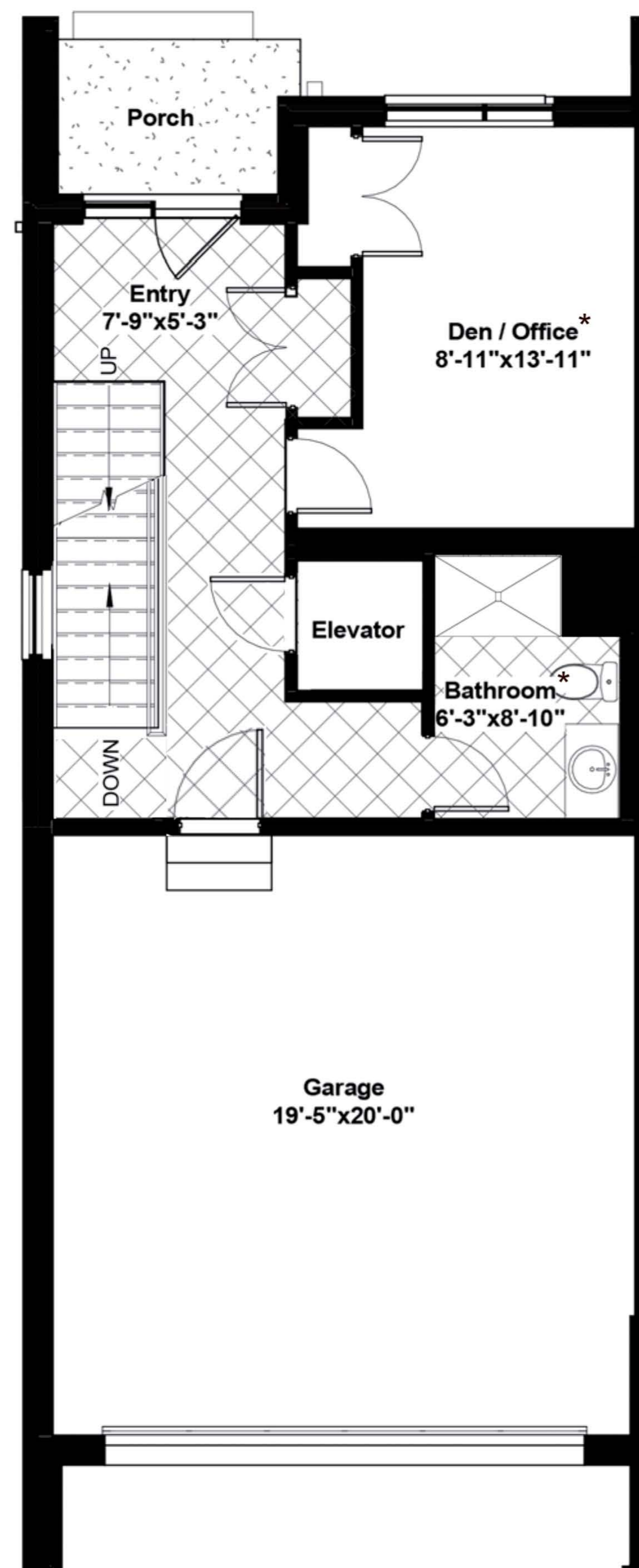
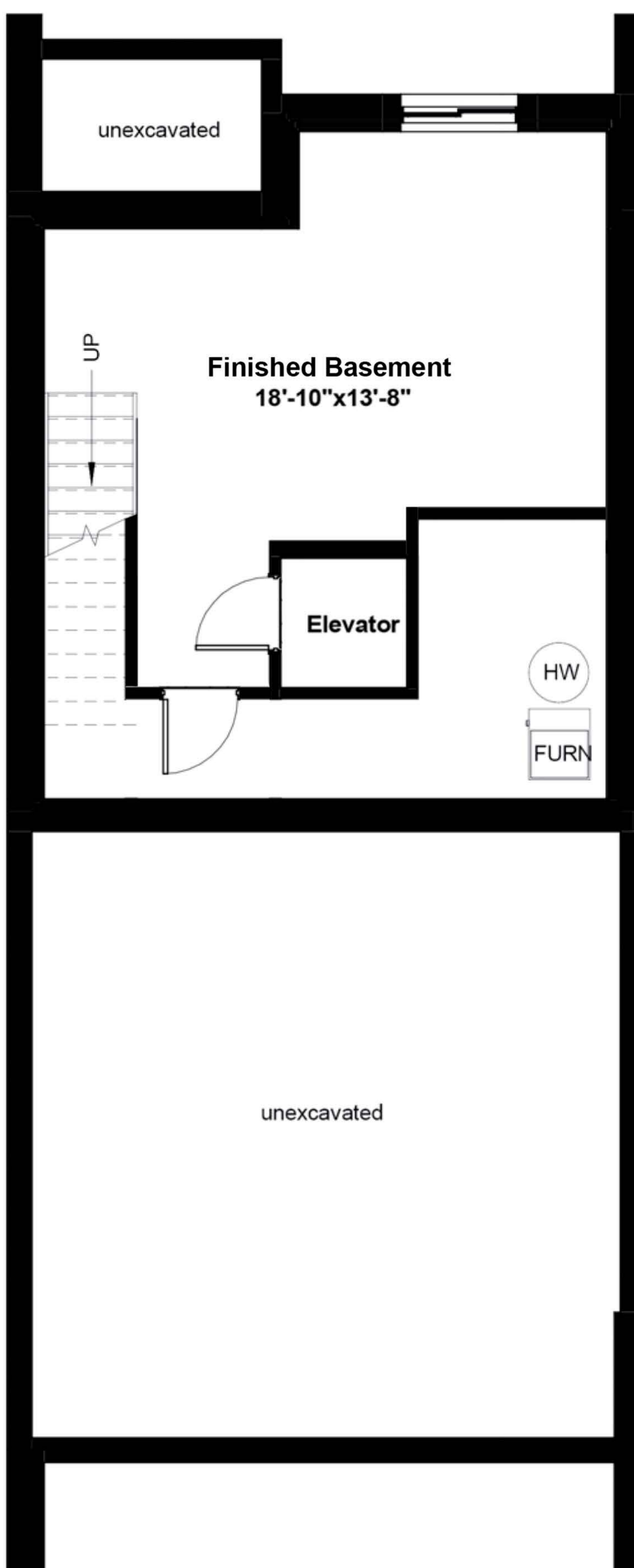
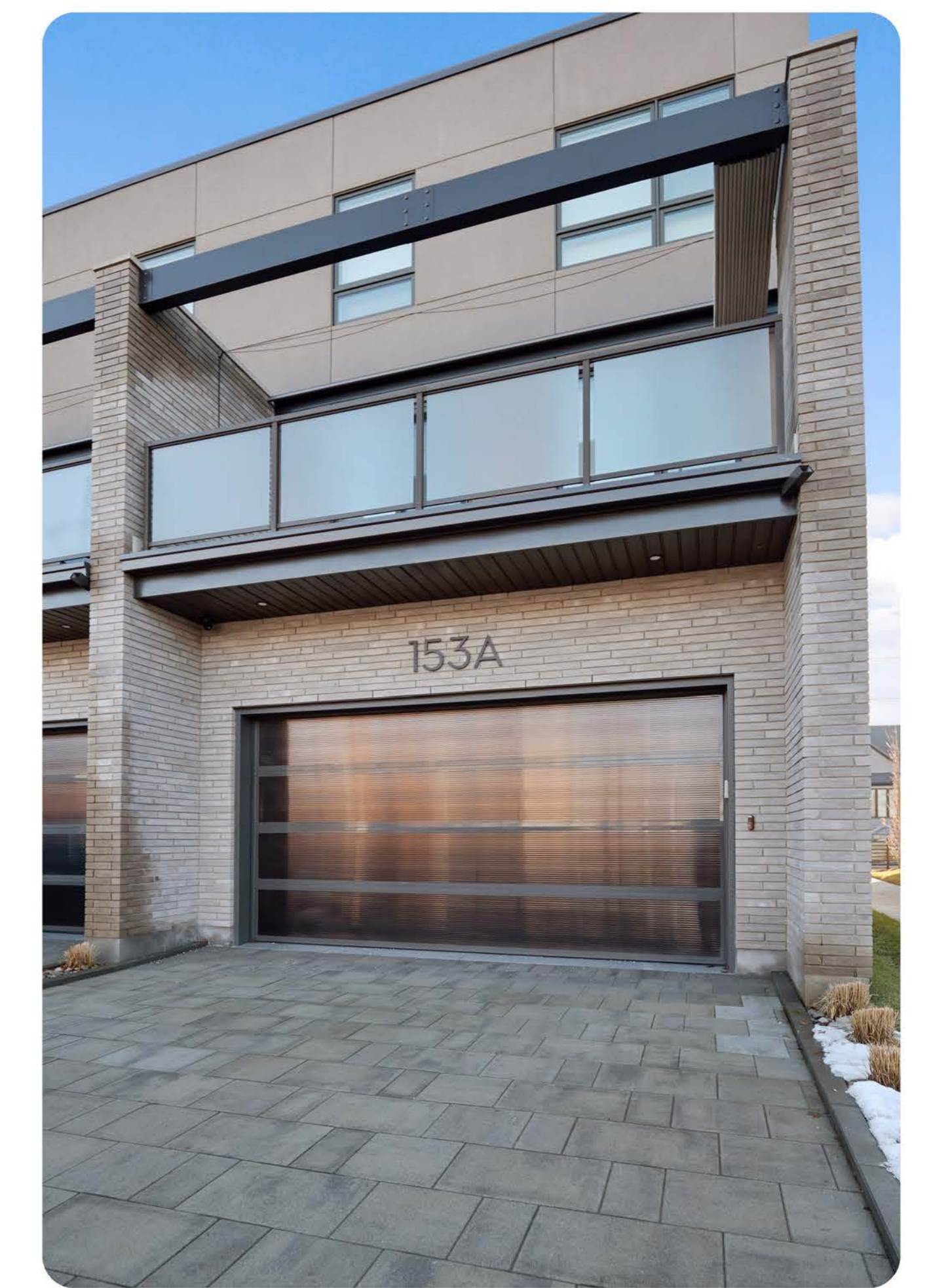
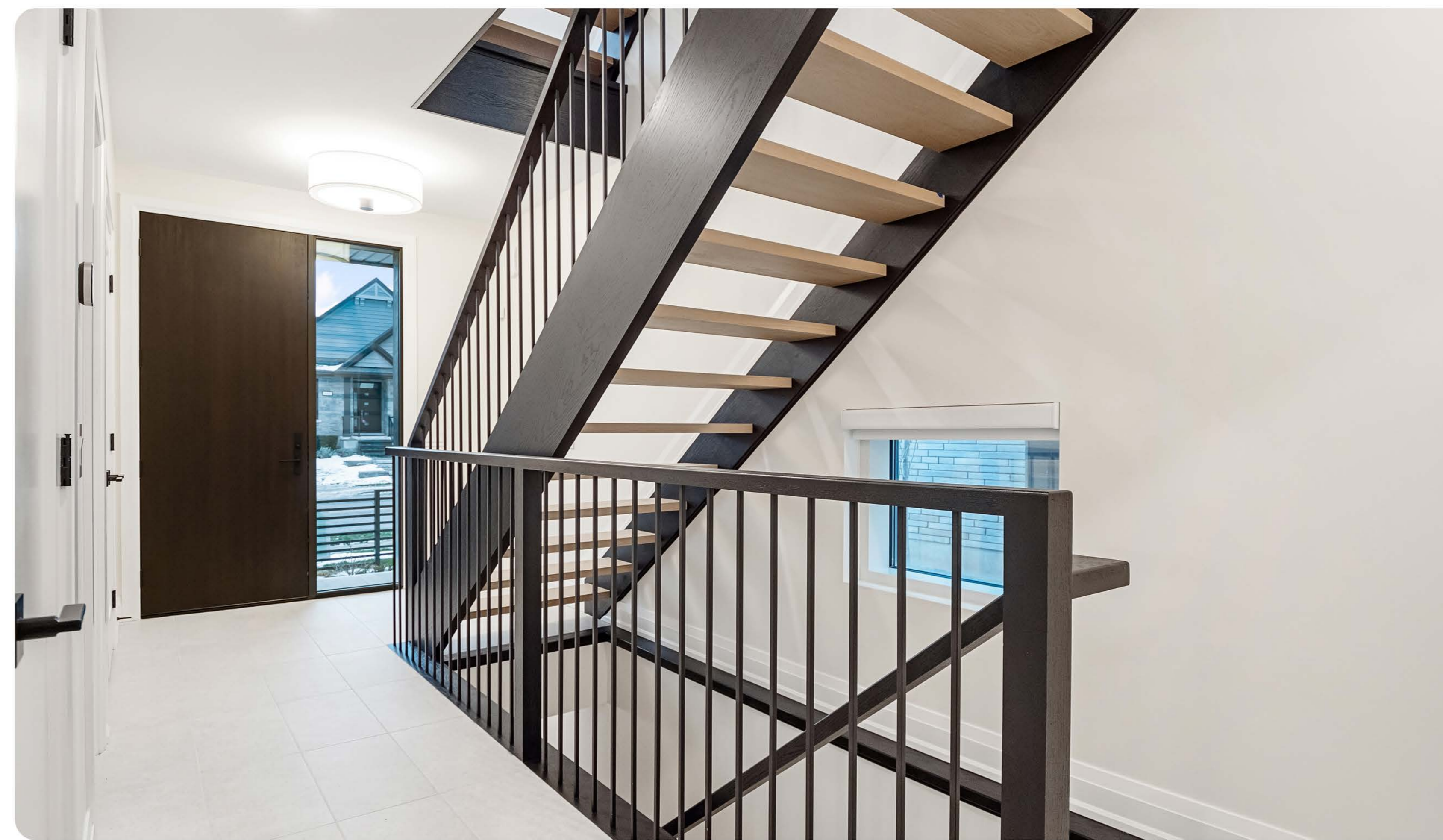
2366 sq ft of Finished Living Space

2131 SQ FT PLUS 235 SQ FT OF FINISHED BASEMENT



FEATURES

- 3-storey condo town
- 2 bed + den, 3.5 bath
- Private elevator
- Quartz ctops in kitchen & baths
- 77" electric fireplace
- Fisher & Paykel appliances
- Motorized window coverings
- SMART home system
- Full landscape package



0% MORTGAGE FINANCING for 3 YEARS*

*Available for qualified buyers. Terms and conditions apply. See sales rep for details.

FULL PRICE	BUILDER DISCOUNT	SALE PRICE	ENHANCED HST REBATE	NEW PRICE
\$1,148,990	\$19,090	\$1,129,900	\$106,000	\$1,023,900**

**Prices subject to change at the builder's discretion without notice. E. & O.E.

2366 sq ft of Finished Living Space

2131 SQ FT PLUS 235 SQ FT OF FINISHED BASEMENT



BASE PRICE (incl net HST)

\$1,099,900

READY BY RINALDI UPGRADE PACKAGE

\$49,090

Plumbing and HVAC Upgrades

Upgrades as per order from The Ensuite

Electrical and Lighting Upgrades

Light fixtures above standard allowance

Kitchen, Bathroom and Laundry Room Cabinetry Upgrades

Kitchen:

Increase counter thickness of island to 2 1/2"

2 island waterfalls at 2.5"

Higher than standard level of quartz

Panelled fridge and dishwasher and hardware

Change servery area to bar fridge (cr) and bank of 3 drawers

Cabinetry hood, box style, flip up, flat panel front

Powder room:

Countertop 3" with integrated quartz sink, includes wider vanity up to corner

Flooring Upgrades

Oset Hexagon 7.87"x9" (matte) floor tile to the Powder Room, colour: Iris

Kitchen backsplash: EC Breeze 4"x4"squares, colour: White, installed in a straight stacked format up to beneath the hood range

Other Upgrades

Add appliance package which includes the following appliances:

Fisher & Paykel 36" french door fridge - stainless steel

Fisher & Paykel 36" gas range - stainless steel

Fisher & Paykel 24" built-in dishwasher - stainless steel

24" french door beverage and wine fridge

Elica Palermo hood insert (600 CFM)

Electrolux front load washer (titanium finish)

Electrolux front load dryer - electric (titanium finish)

Hoses - steam set with 4 hoses

Kitchen island stools (4)

Paint accent walls a dark paint colour 'Roycroft Bronze Green' SW 2846 (1 accent wall in powder room and fireplace bumpout in great room)

Paint unfinished area of the basement floor with 2 coats of MF epoxy/acrylic floor paint. Semi gloss (pre-mixed grey) - mechanical room

Add mirror to the ground floor bathroom, 2pce powder room and 3pce bath in Bedroom 2 and Ensuite.

For more information contact our sales team at 905 688 1283 | sales@rinaldihomes.com | rinaldihomes.com



0% MORTGAGE FINANCING for 3 YEARS*

*Available for qualified buyers. Terms and conditions apply. See sales rep for details.

FULL PRICE
\$1,148,990

BUILDER DISCOUNT
\$19,090

SALE PRICE
\$1,129,900

ENHANCED HST REBATE
\$106,000

NEW PRICE
\$1,023,900**

**Prices subject to change at the builder's discretion without notice. E. & O.E.