

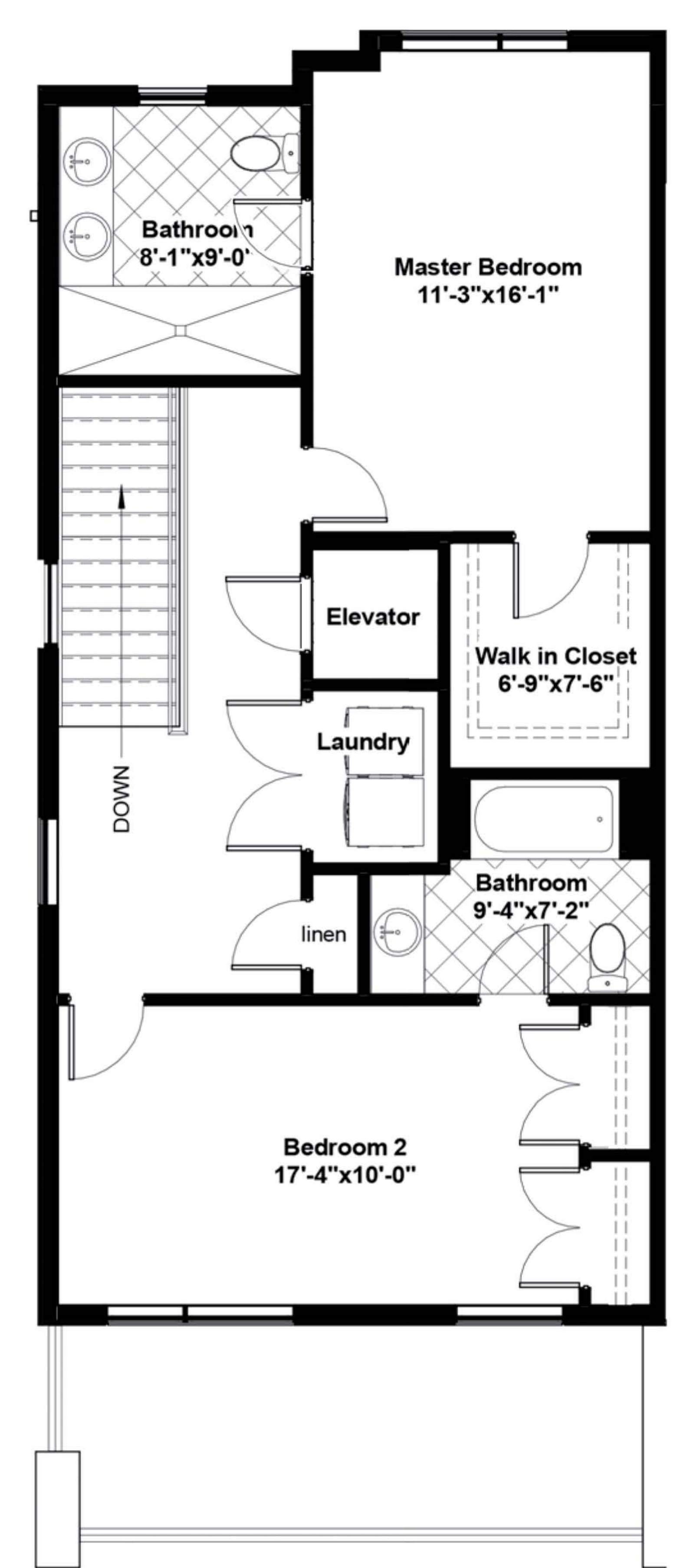
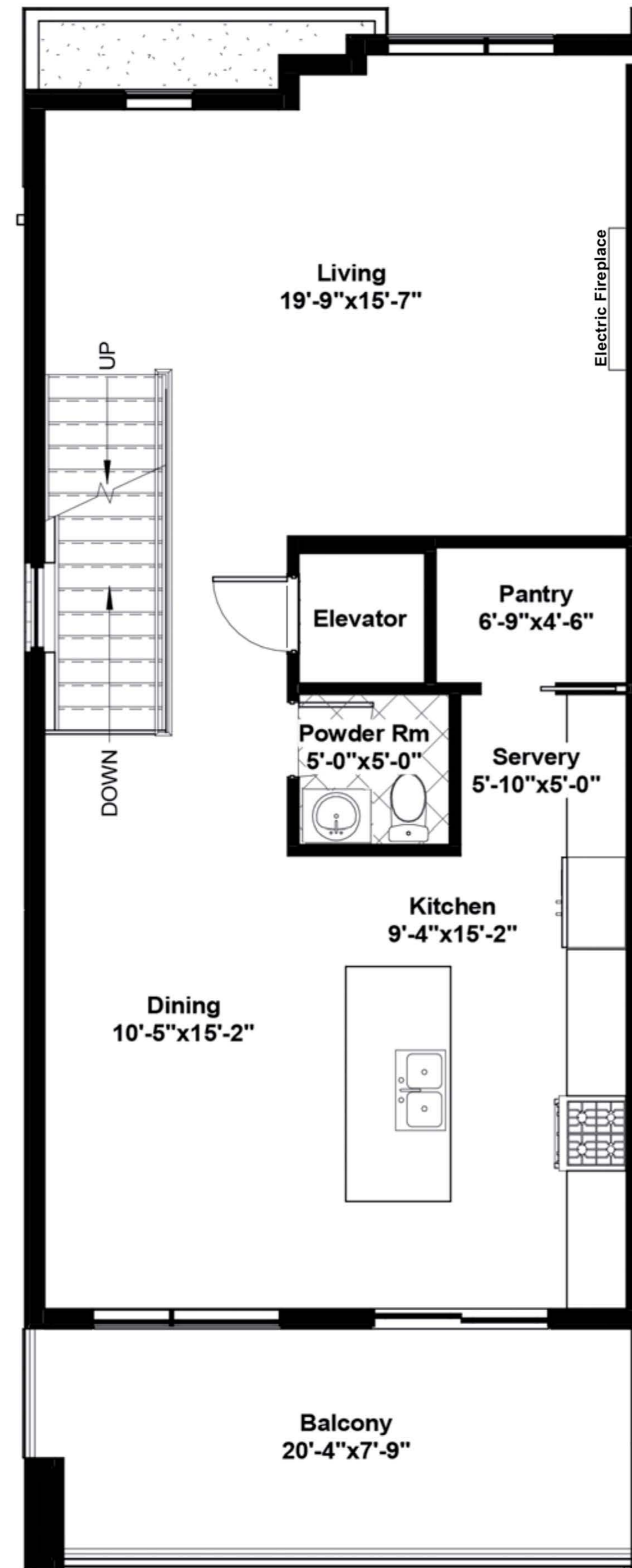
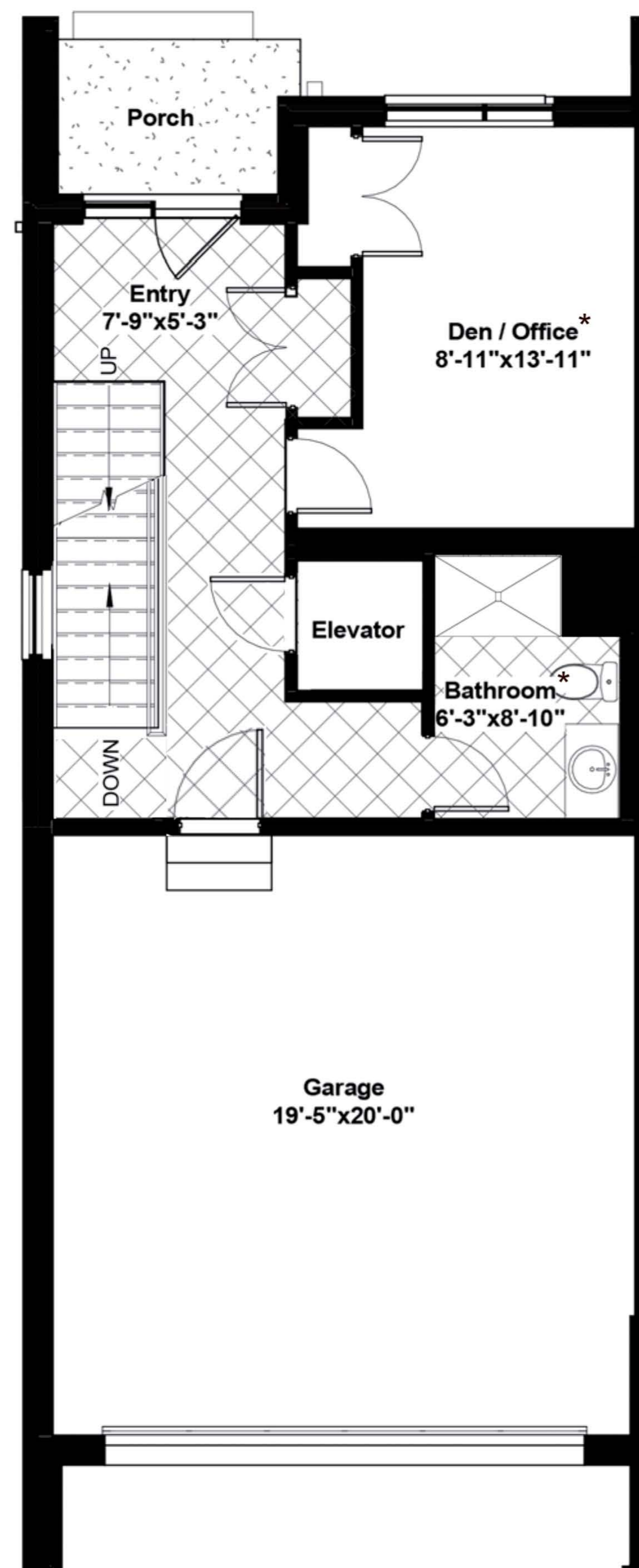
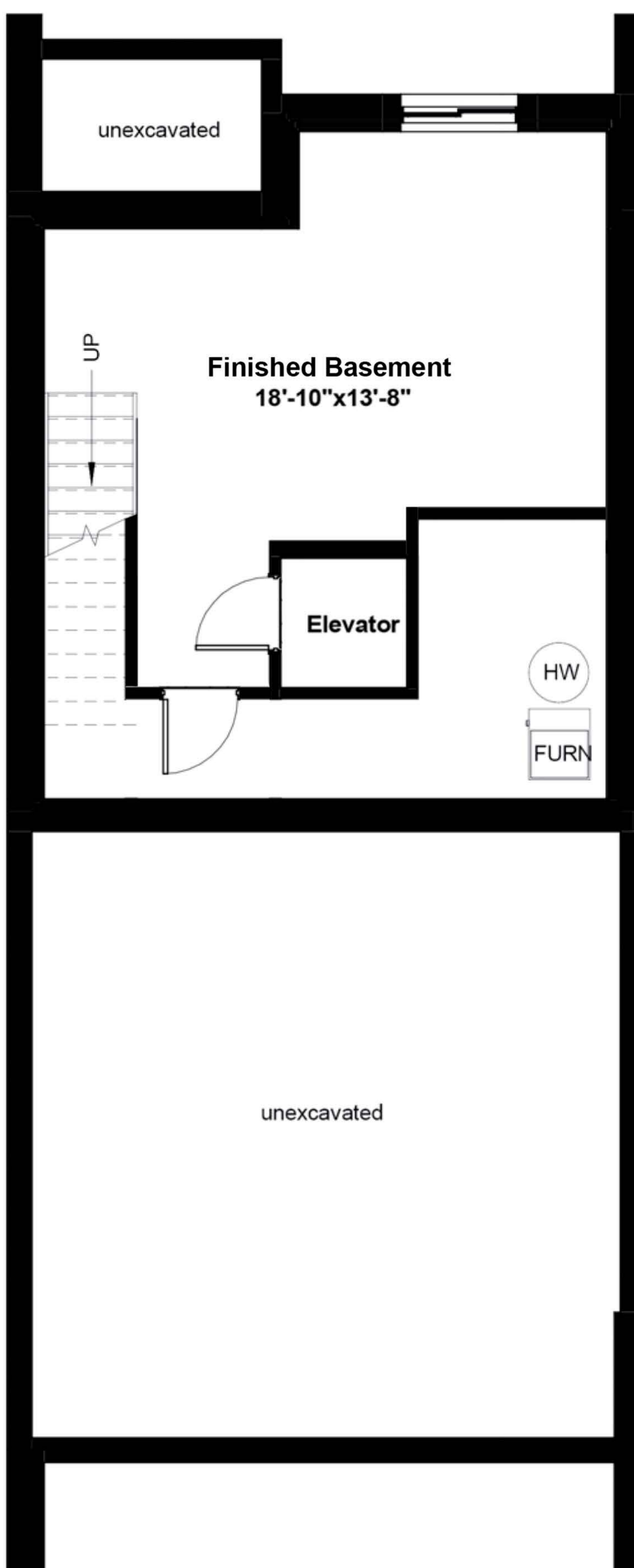
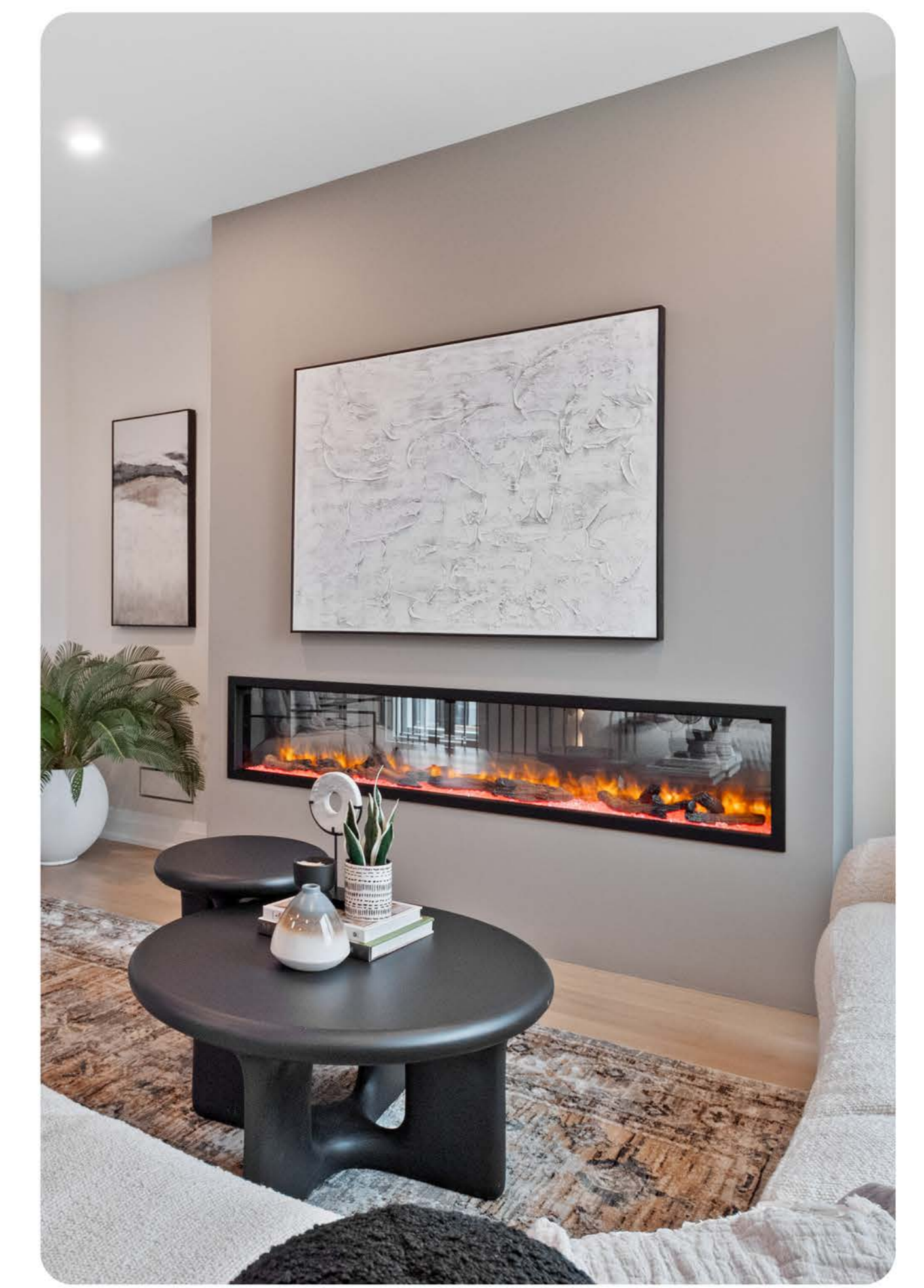
2366 sq ft of Finished Living Space

2131 SQ FT PLUS 235 SQ FT OF FINISHED BASEMENT



FEATURES

- 3-storey condo town
- 2 bed + den, 3.5 bath
- Private elevator
- Quartz ctops in kitchen & baths
- 77" electric fireplace
- Fisher & Paykel appliances
- Motorized window coverings
- 2nd floor terrace
- Full landscape package



0% MORTGAGE FINANCING for 3 YEARS*

*Available for qualified buyers. Terms and conditions apply. See sales rep for details.

FULL PRICE	BUILDER DISCOUNT	SALE PRICE	ENHANCED HST REBATE	NEW PRICE
\$1,180,325	\$40,425	\$1,139,900	\$106,000	\$1,033,900**

**Prices subject to change at the builder's discretion without notice. E. & O.E.

2366 sq ft of Finished Living Space

2131 SQ FT PLUS 235 SQ FT OF FINISHED BASEMENT



BASE PRICE (incl net HST)

\$1,129,900

READY BY RINALDI UPGRADE PACKAGE

\$50,425

Plumbing and HVAC Upgrades

Upgrades as per order from The Ensuite

Electrical and Lighting Upgrades

Light fixtures above standard allowance

Kitchen, Bathroom and Laundry Room Cabinetry Upgrades

Kitchen:

Increase counter thickness of island to 2 1/2"

Flat panel cabinetry pilasters on sides of island. Depth and width to match countertop

Panelled fridge and dishwasher and hardware

Full height quartz backsplash to match kitchen countertop selection

Cabinetry hood - Box style, flip up, flat panel front

Change servery area to bar fridge and bank of 3 drawers

Powder Room:

Countertop 3" with integrated quartz sink, includes wider vanity up to corner

Ensuite:

Increase countertop thickness to 2.5"

Flooring Upgrades

Fireplace (based on 99"wide x 108"tall) Brazilian slate tile installed on the face of the electric fireplace build-out in the living room, in a horizontal format

Kitchen backsplash Raid polished 3"x8" white installed in a vertical stacked format up to the ceiling in behind the hood range

Carpeted stairs to basement - labour for pattern repeat

Other Upgrades

Add appliance package which includes the following appliances:

Fisher & Paykel 36" french door fridge - stainless steel

Fisher & Paykel 36" gas range - stainless steel

Fisher & Paykel 24" built-in dishwasher - stainless steel

Electrolux front load washer

Electrolux front load dryer - electric

Hoses - steam set with 4 hoses

Kitchen island stools (4)

Paint unfinished area of the basement floor with 2 coats of MF epoxy/acrylic floor paint. Semi gloss (pre-mixed grey) - mechanical room

Add mirror to the ground floor bathroom, 2pce powder room and 3pce bath in Bedroom 2 and Ensuite

For more information contact our sales team at 905 688 1283 | sales@rinaldihomes.com | rinaldihomes.com



Currently staged with a designer curated furniture & accessories package. Items are available for purchase with the unit, contact our sales team for details.

0% MORTGAGE FINANCING for 3 YEARS*

*Available for qualified buyers. Terms and conditions apply. See sales rep for details.

FULL PRICE
\$1,180,325

BUILDER DISCOUNT
\$40,425

SALE PRICE
\$1,139,900

ENHANCED HST REBATE
\$106,000

NEW PRICE
\$1,033,900**

**Prices subject to change at the builder's discretion without notice. E. & O.E.