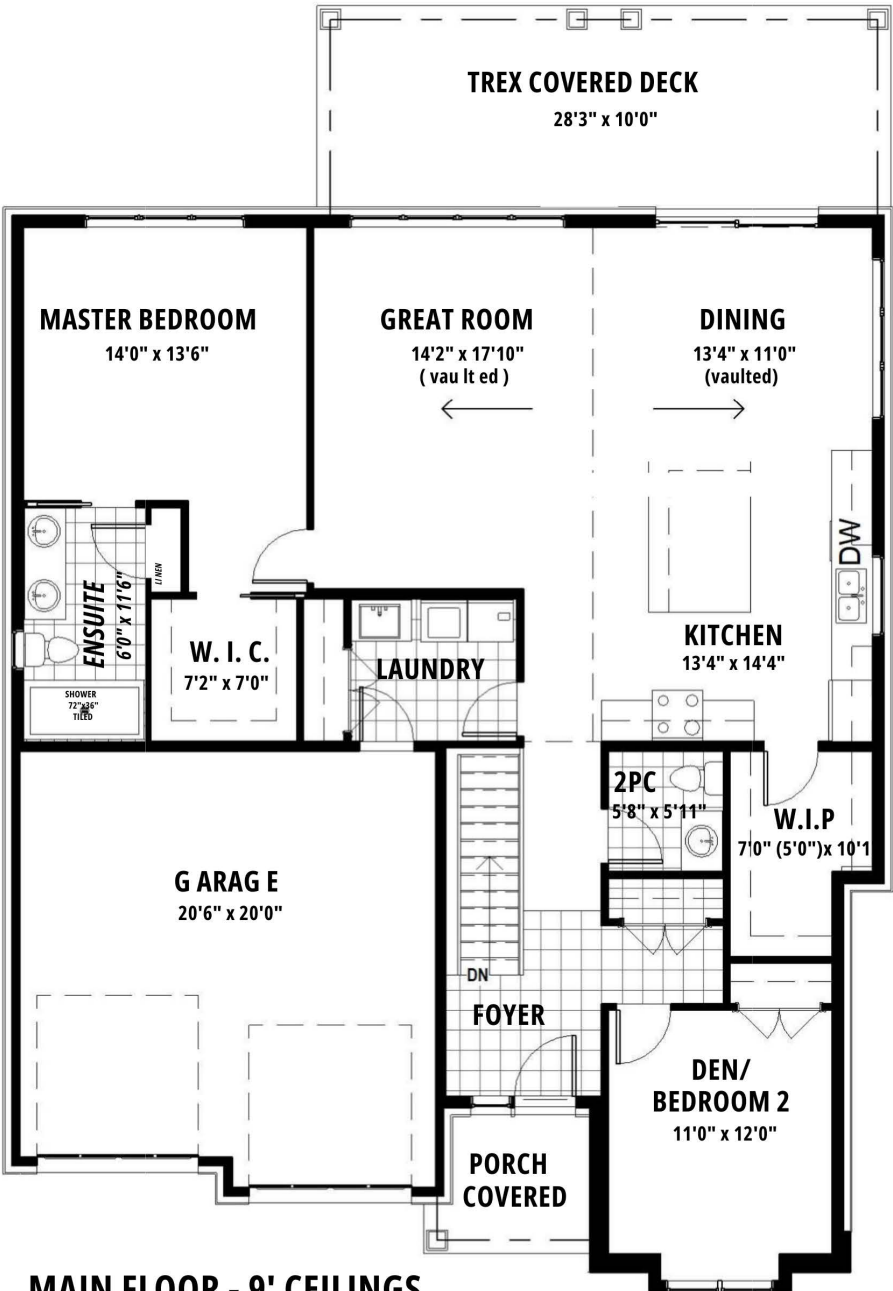




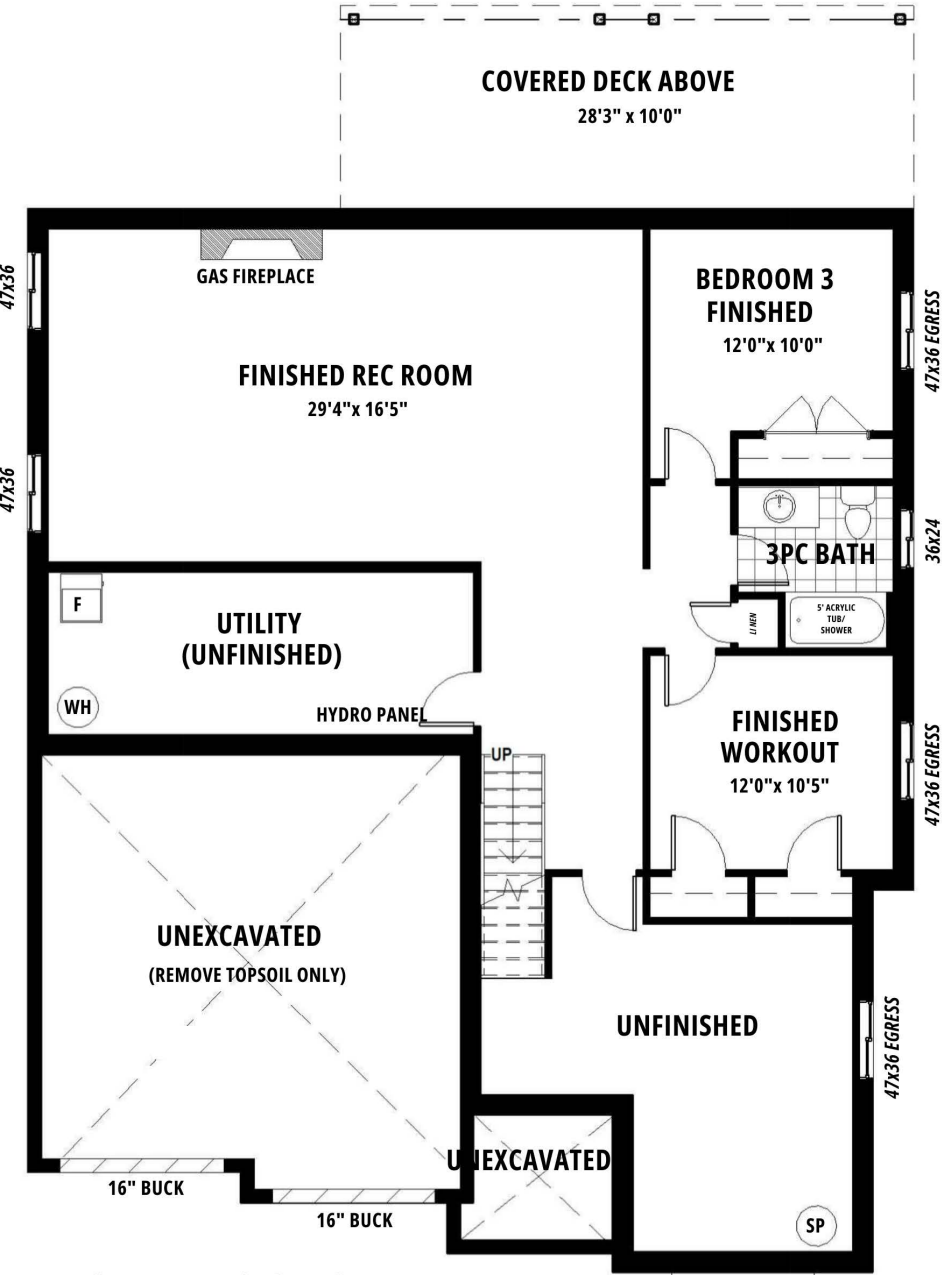
27 Maple Leaf Ave

WIDTH: 43'8" LENGTH: 54'3"

1659 sq ft + 1089 sq ft of finished basement



**MAIN FLOOR - 9' CEILINGS
1659 SQ.FT.**



**BASEMENT - 8'4" POUR
1089 SQ.FT. FINISHED AREA**

FLOOR ABOVE
CANTILEVERED



27 Maple Leaf Ave

WIDTH: 43'8" LENGTH: 54'3"

1659 sq ft + 1089 sq ft of finished basement



Rinaldi
HOMES