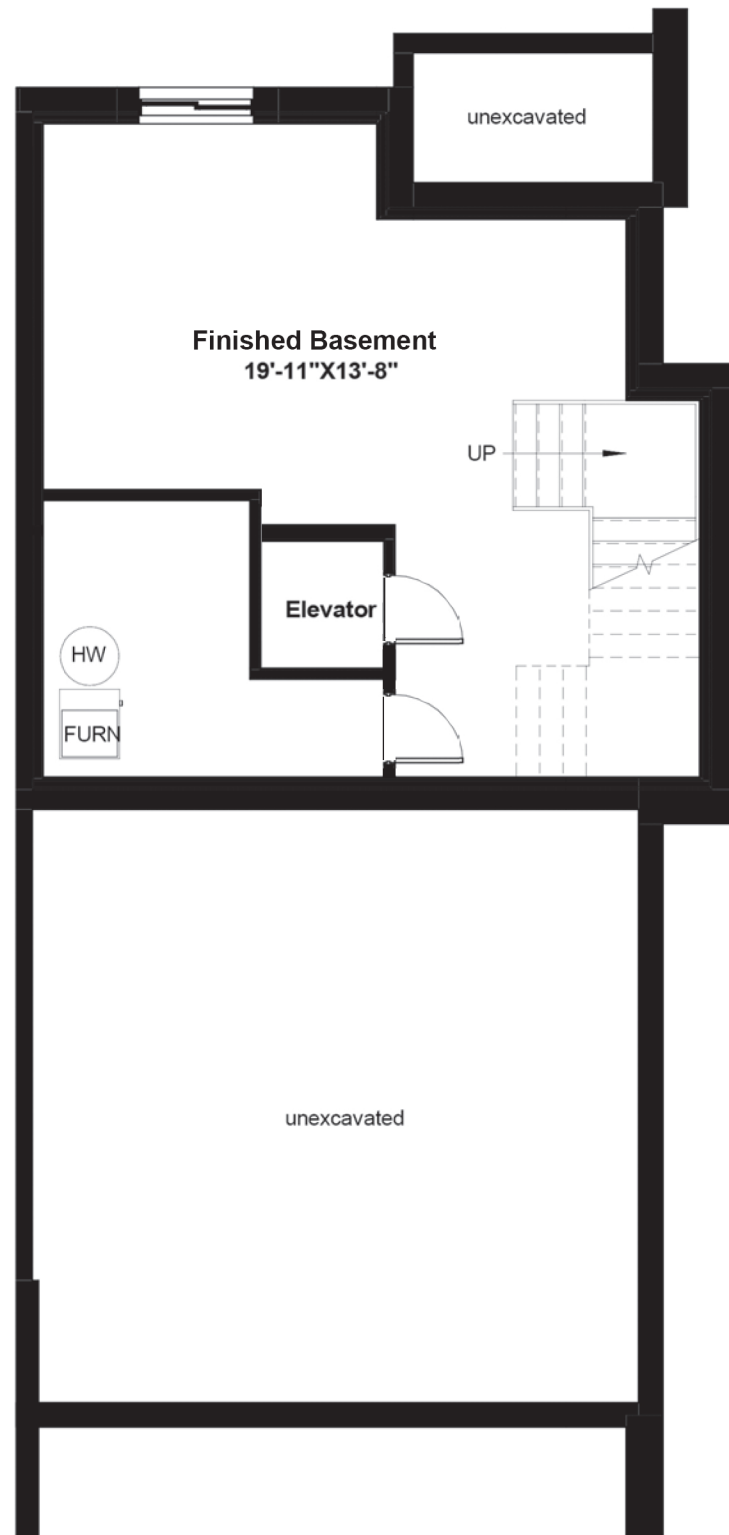
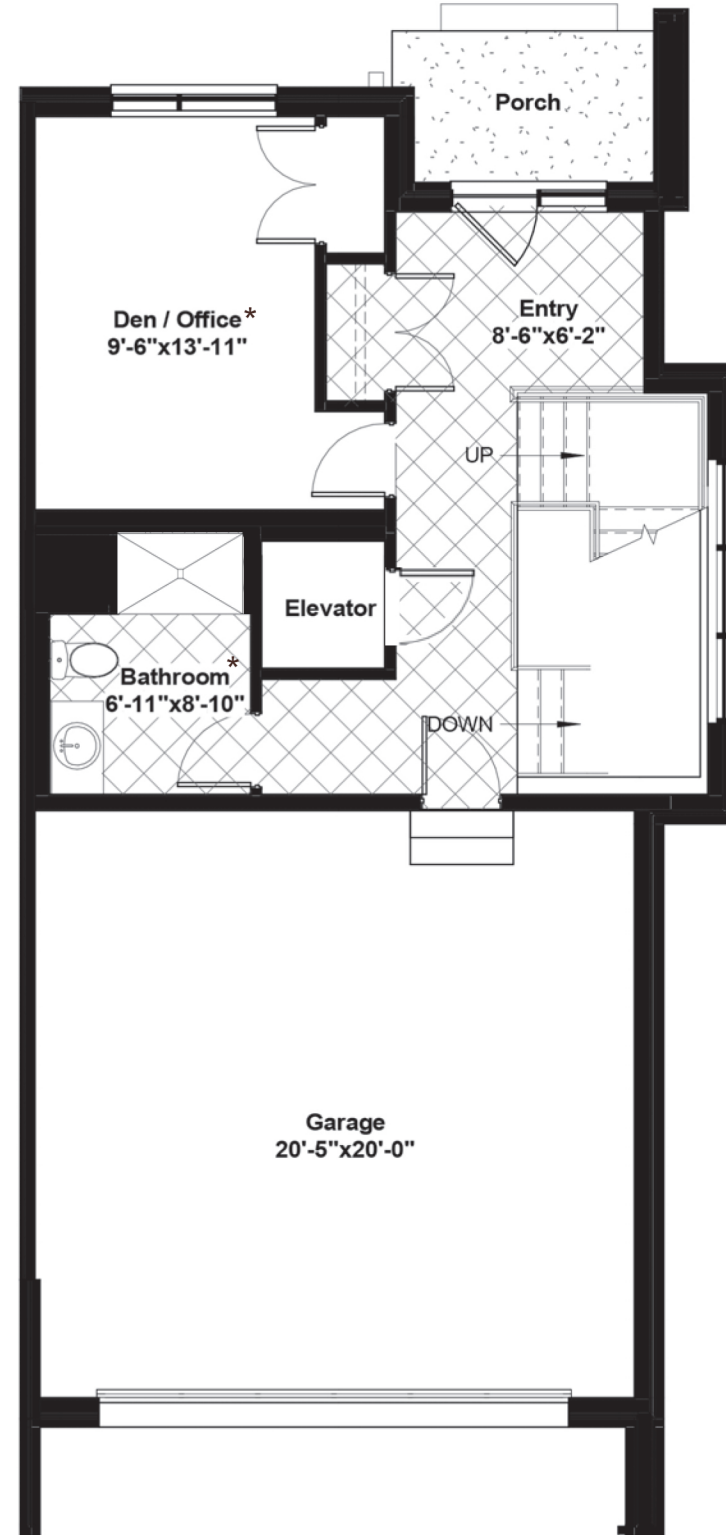


UNIT TYPE "C"

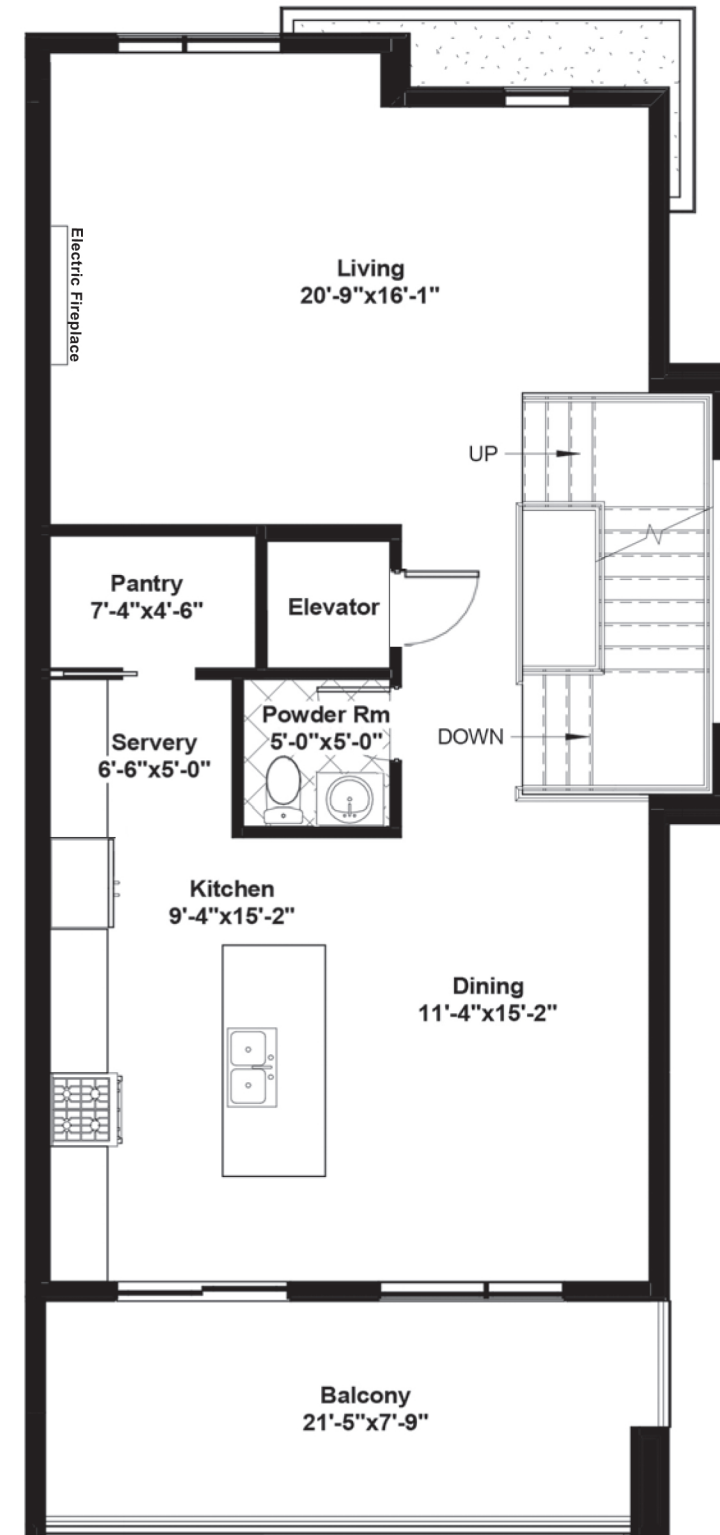
Width: 21'11" Length: 51'8"
 *2273 sq ft + 284 sq ft fin bsmt



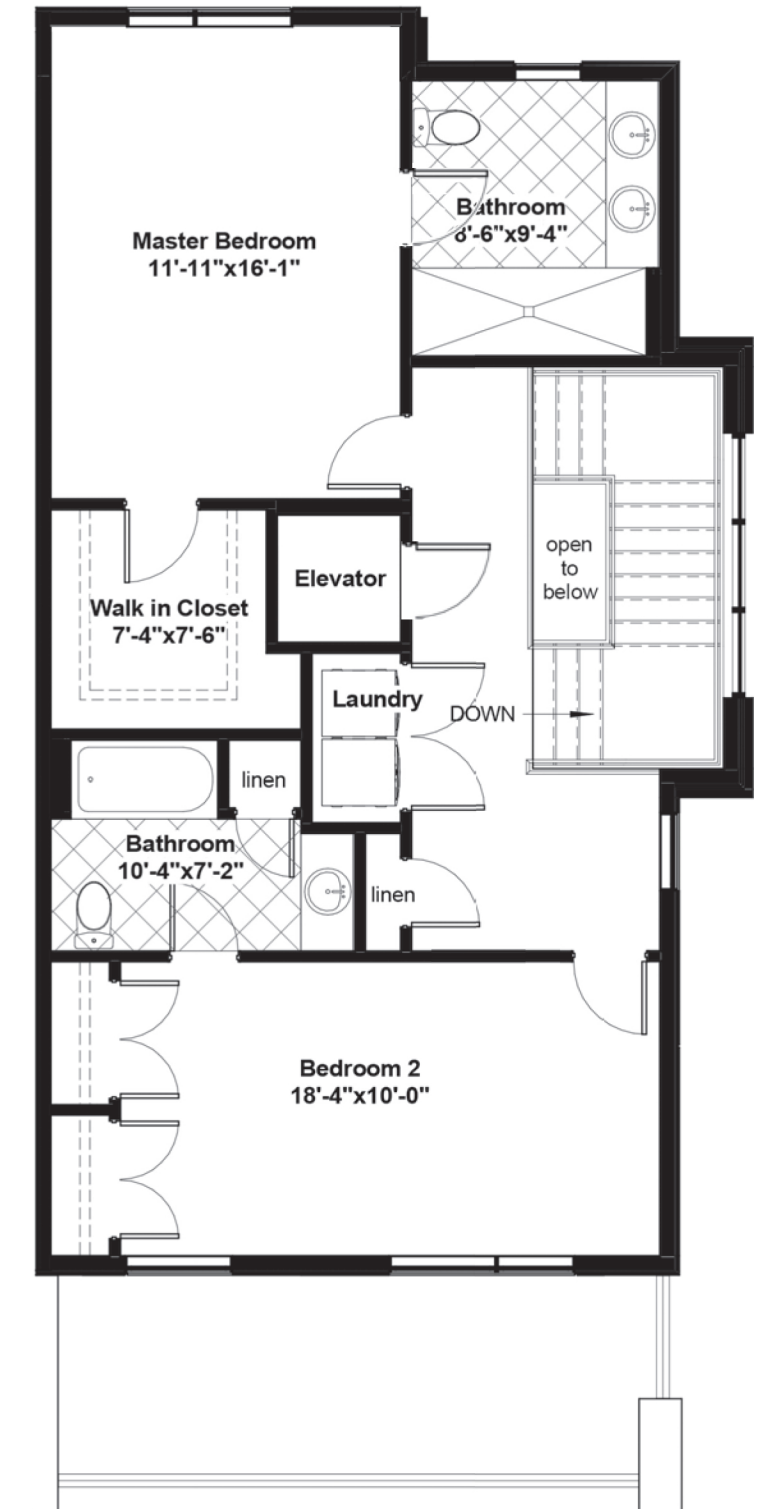
BASEMENT - 284 SF - 7'10" POUR



GROUND FLOOR - 551 SF - 9' CEILINGS *
 *Den/Office & Bathroom 8' ceilings



SECOND FLOOR - 861 SF - 9' CEILINGS



THIRD FLOOR - 861 SF - 8' CEILINGS