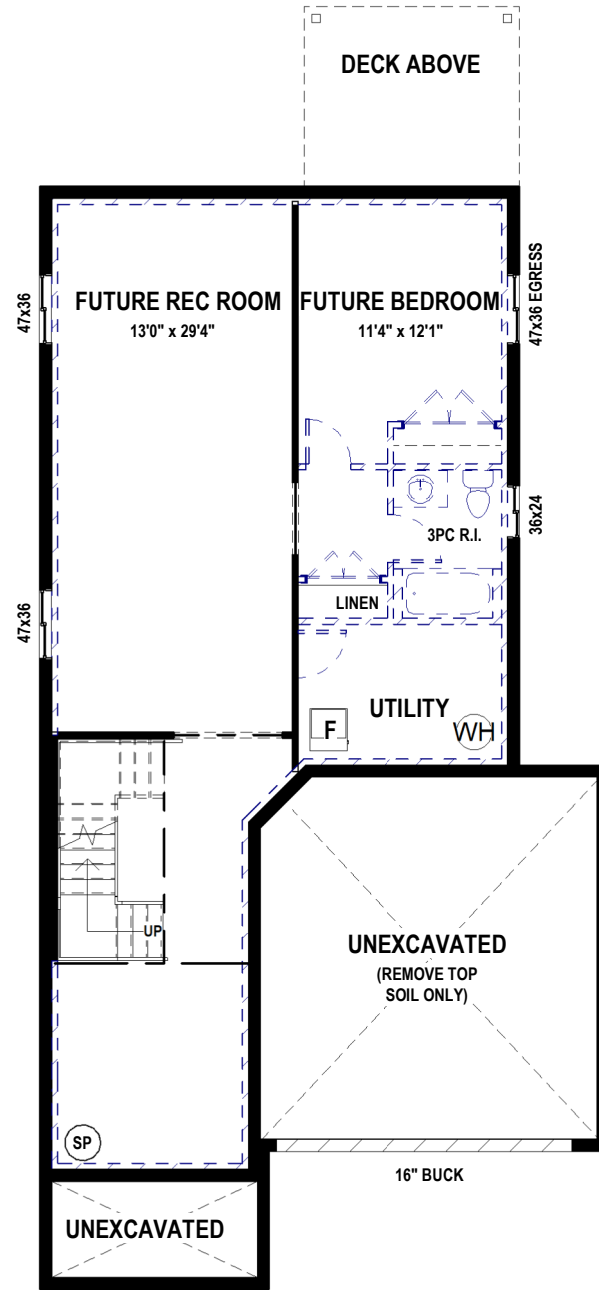
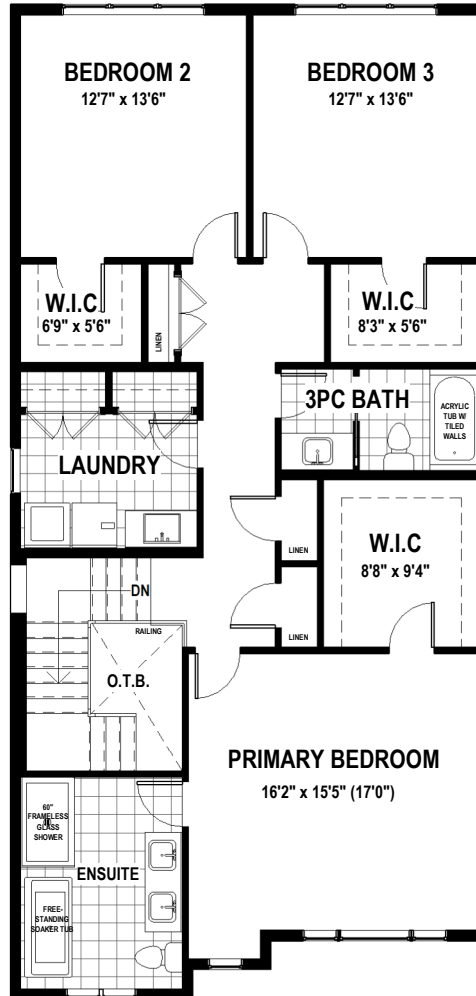
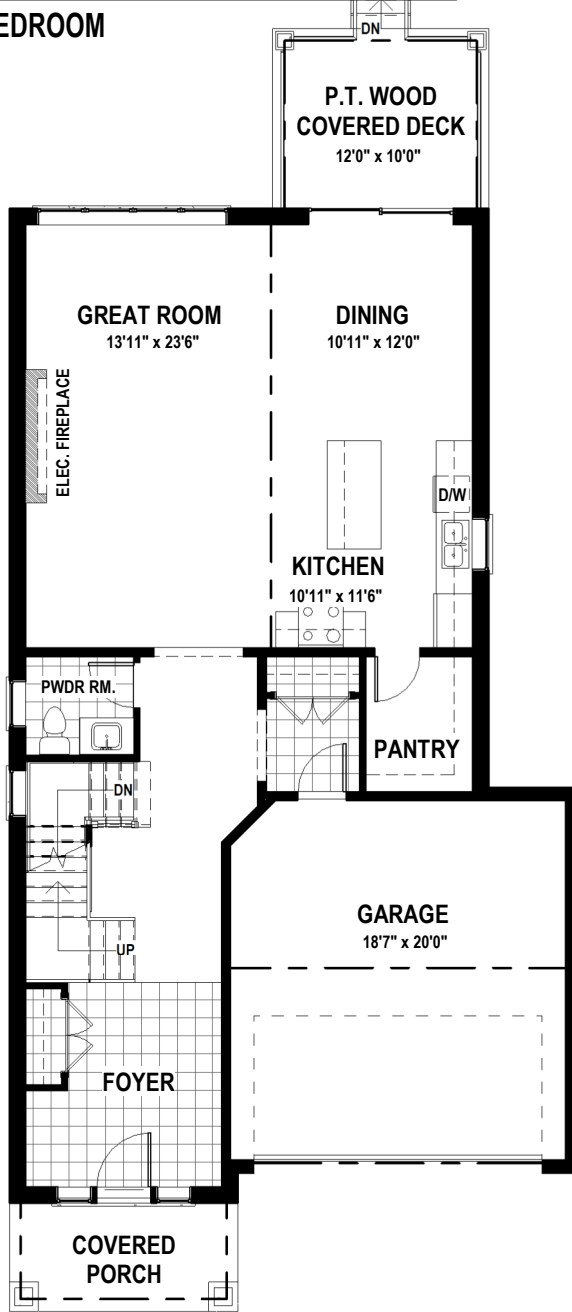


# WOODSIDE 2 - Elevation A

2587 SQ.FT.  
WIDTH - 31'8"  
LENGTH - 61'4"

3 BEDROOM



**WILLOW RIDGE**  
AT SAFFRON MEADOWS

# WOODSIDE 2 - Elevation A

2587 SQ.FT.  
WIDTH - 31'8"  
LENGTH - 61'4"

3 BEDROOM



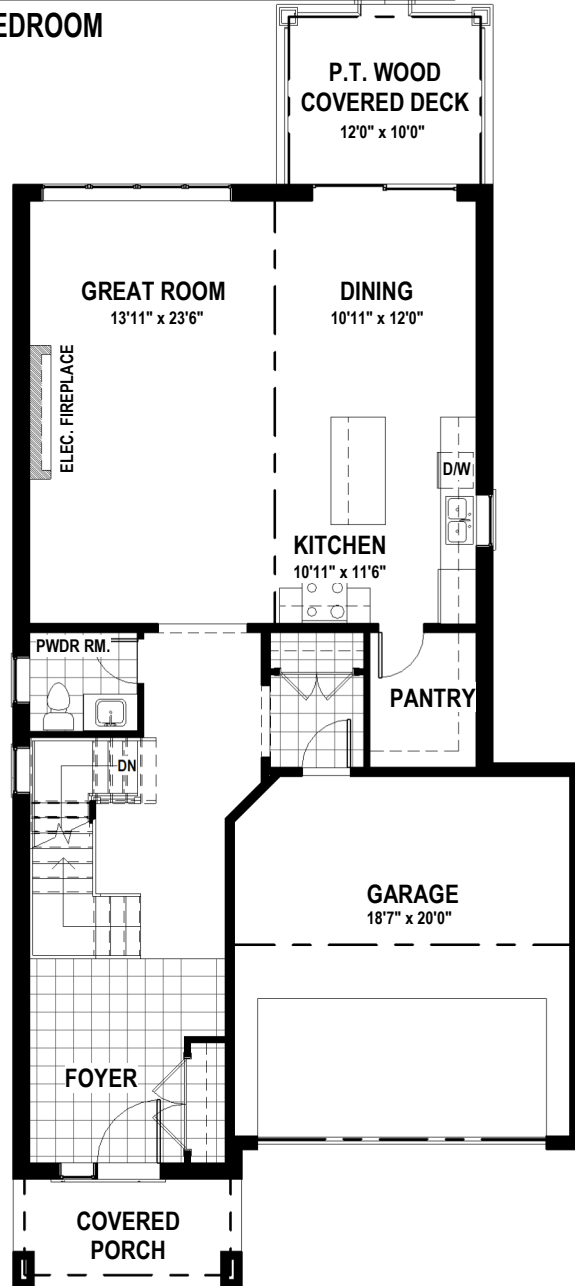
 [RinaldiHomes.com](http://RinaldiHomes.com)  
905-688-1283

*Rinaldi*  
HOMES

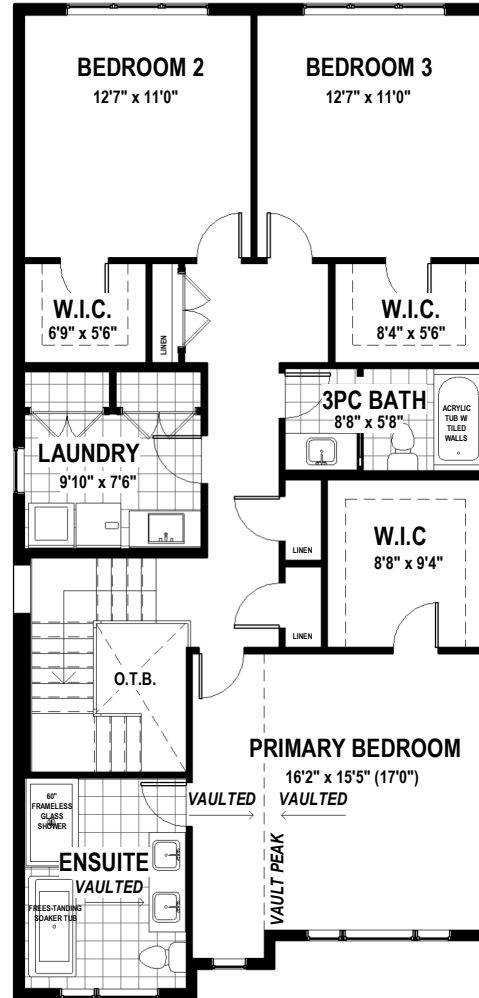
# WOODSIDE 2 - Elevation B

2587 SQ.FT.  
WIDTH - 31'8"  
LENGTH - 61'4"

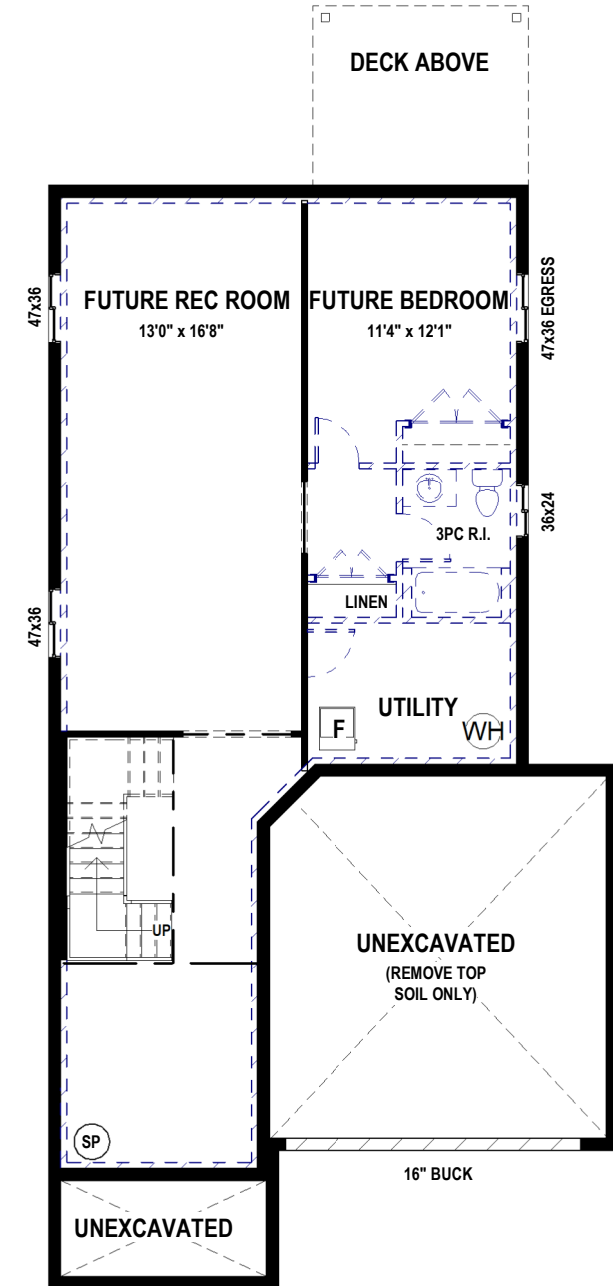
3 BEDROOM



**MAIN FLOOR - 1158 SQ.FT. - 9' CEILINGS**



**2ND FLOOR - 1429 SQ.FT. - 8' CEILINGS**



**BASEMENT - UNFINISHED - 8'4" POUR**



**WILLOW RIDGE**  
AT SAFFRON MEADOWS

# WOODSIDE 2 - Elevation B

2587 SQ.FT.  
WIDTH - 31'8"  
LENGTH - 61'4"

3 BEDROOM

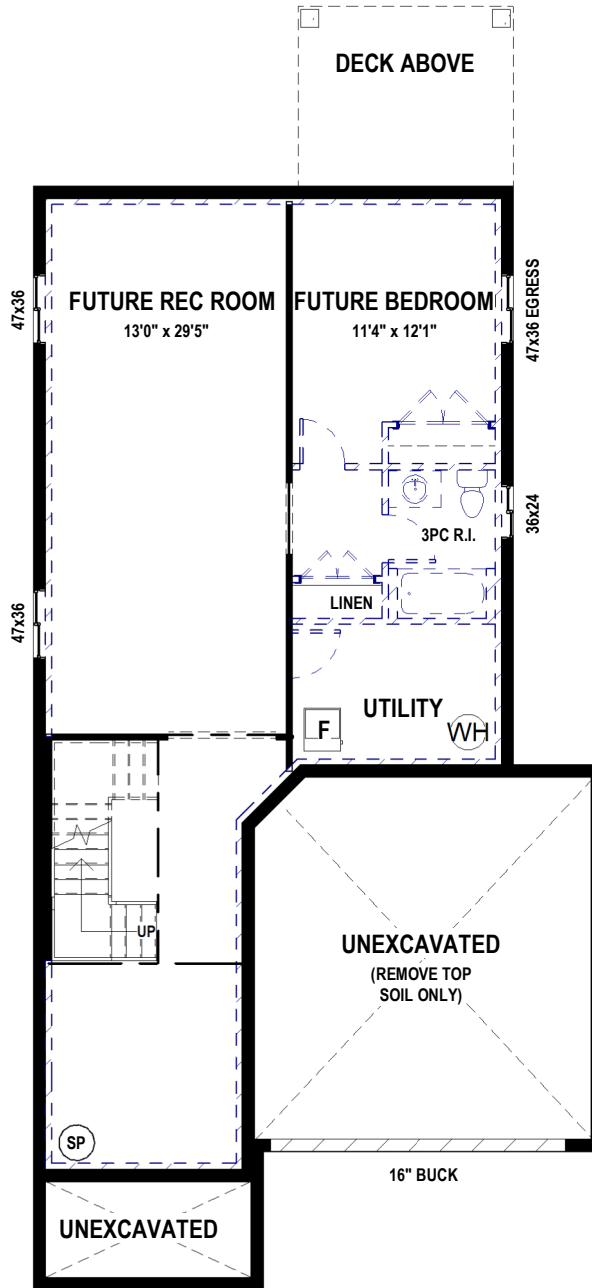
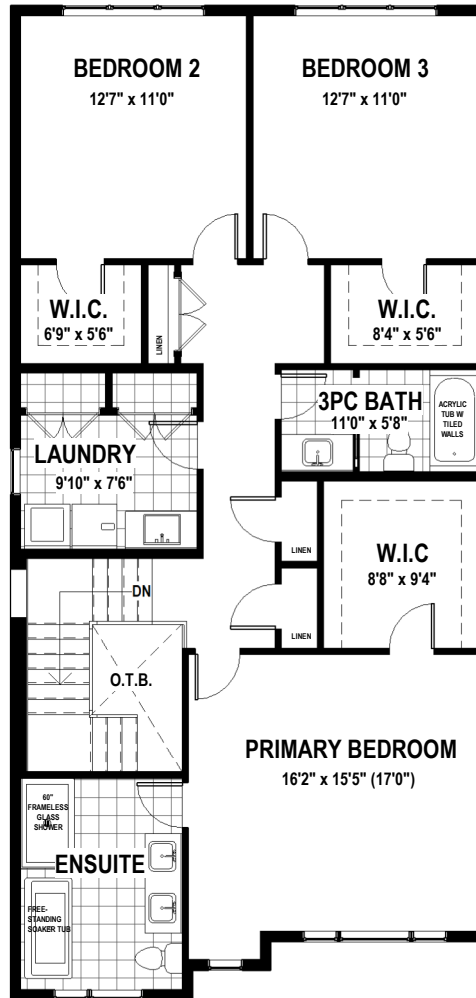
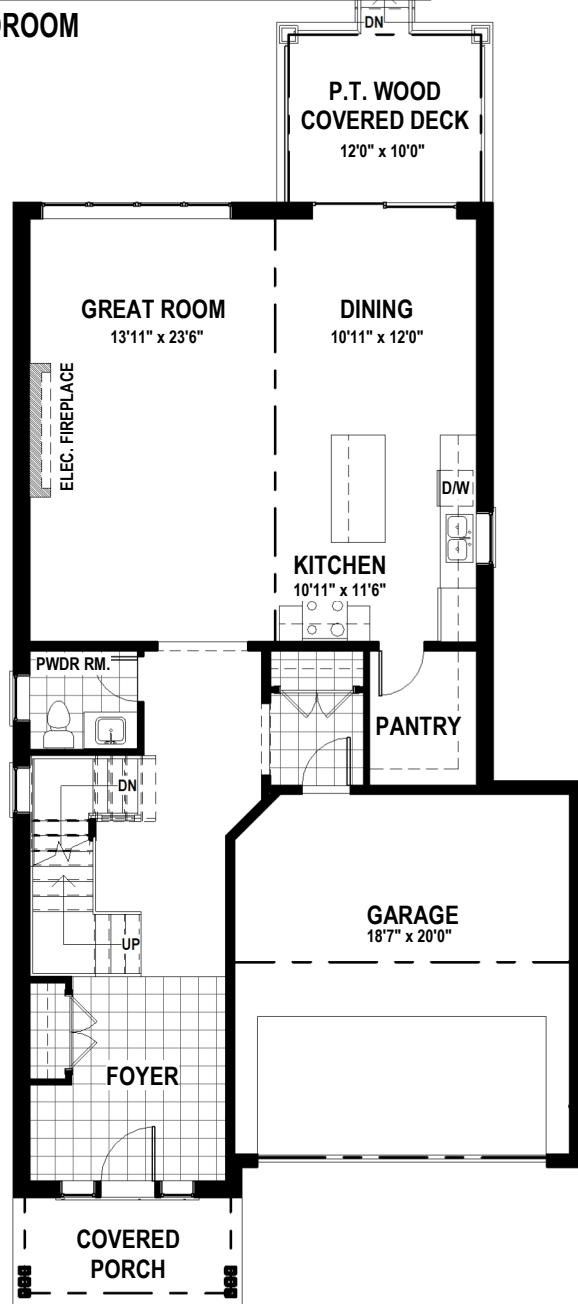


  
**Rinaldi**  
HOMES  
RinaldiHomes.com  
905-688-1283

# WOODSIDE 2 - Elevation C

2587 SQ.FT.  
WIDTH - 31'8"  
LENGTH - 61'4"

3 BEDROOM



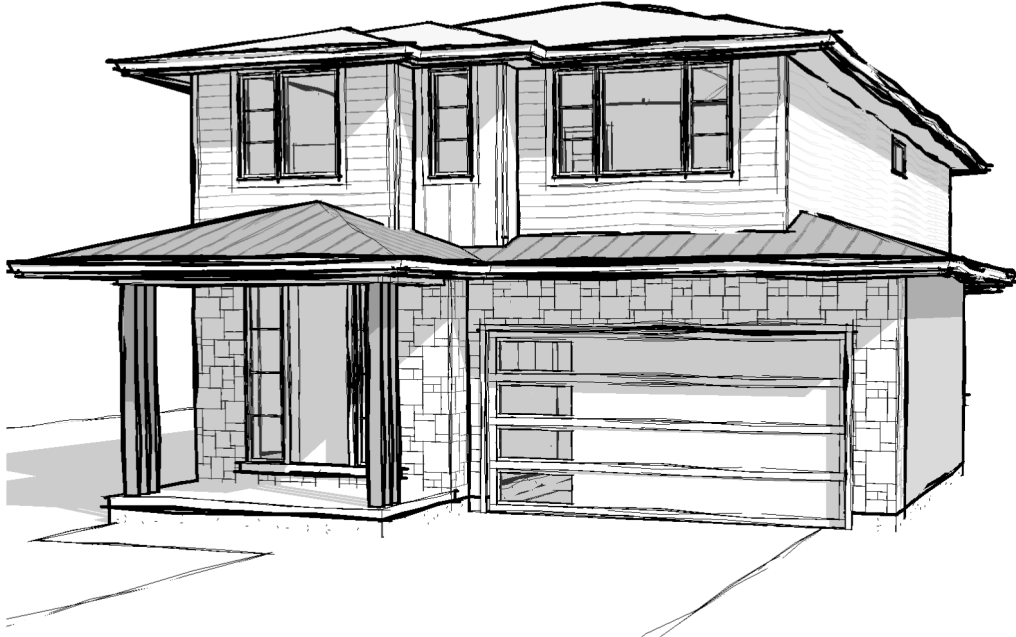
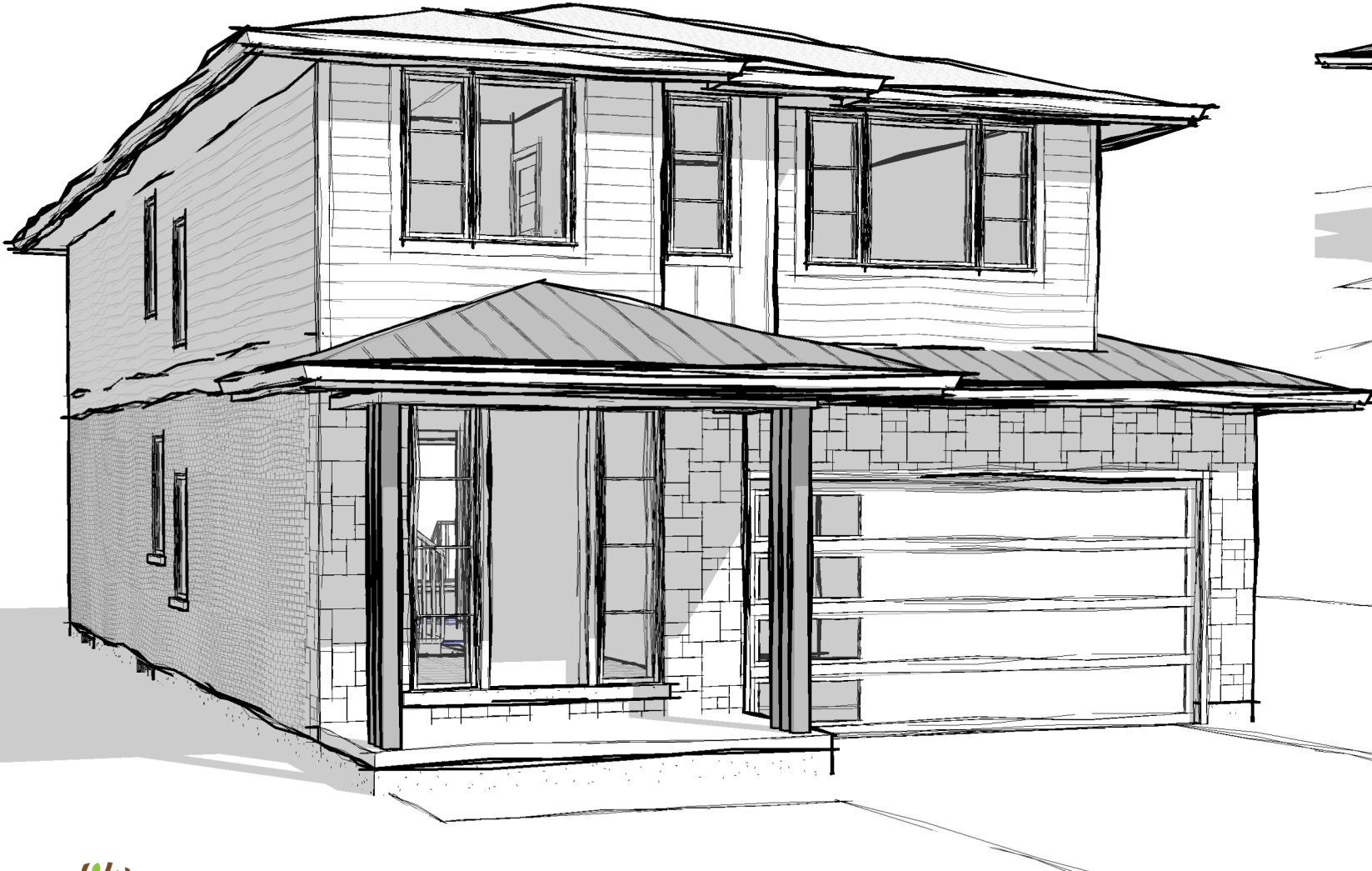
**WILLOW RIDGE**  
AT SAFFRON MEADOWS



# WOODSIDE 2 - Elevation C

2587 SQ.FT.  
WIDTH - 31'8"  
LENGTH - 61'4"

3 BEDROOM



 [RinaldiHomes.com](http://RinaldiHomes.com)  
**Rinaldi**  
HOMES  
905-688-1283