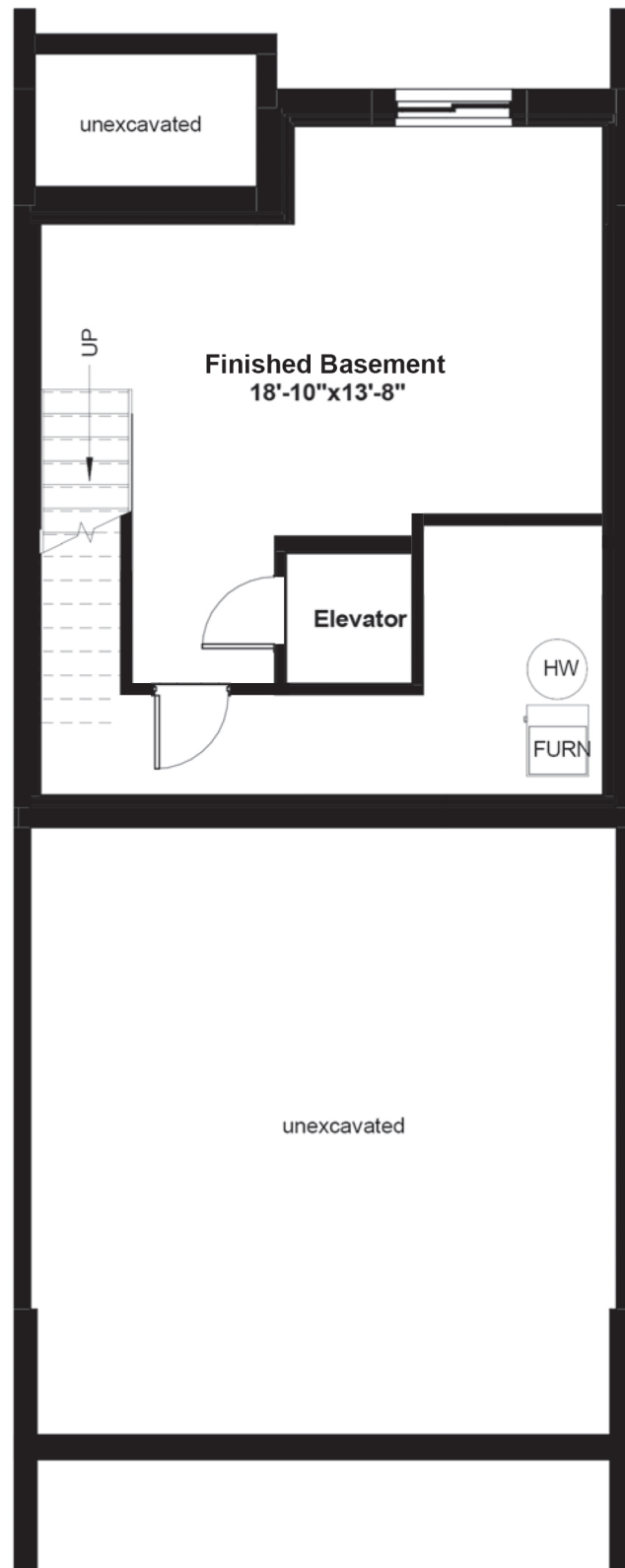


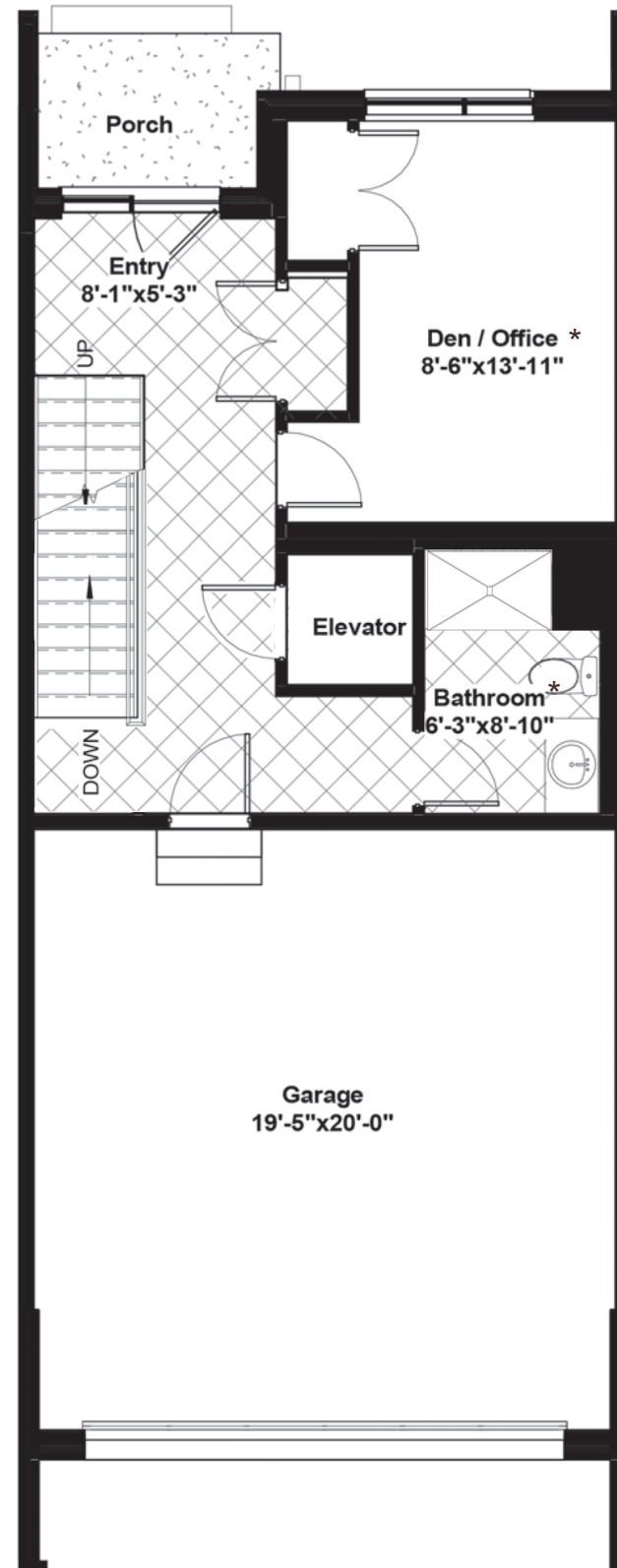
UNIT TYPE "B"

Width: 20'4" Length: 51'8"

*2077 sq ft + 237 sq ft fin bsmt

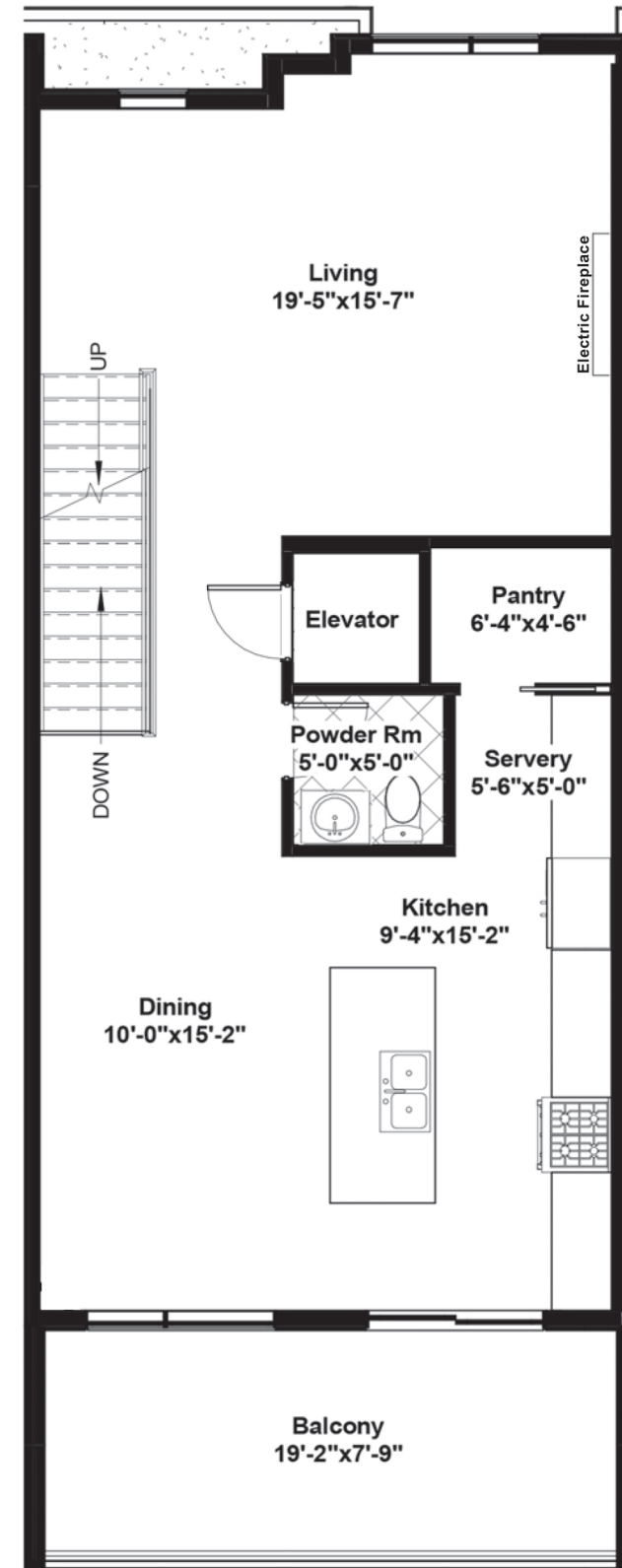


BASEMENT - 237 SF - 7'10" POUR

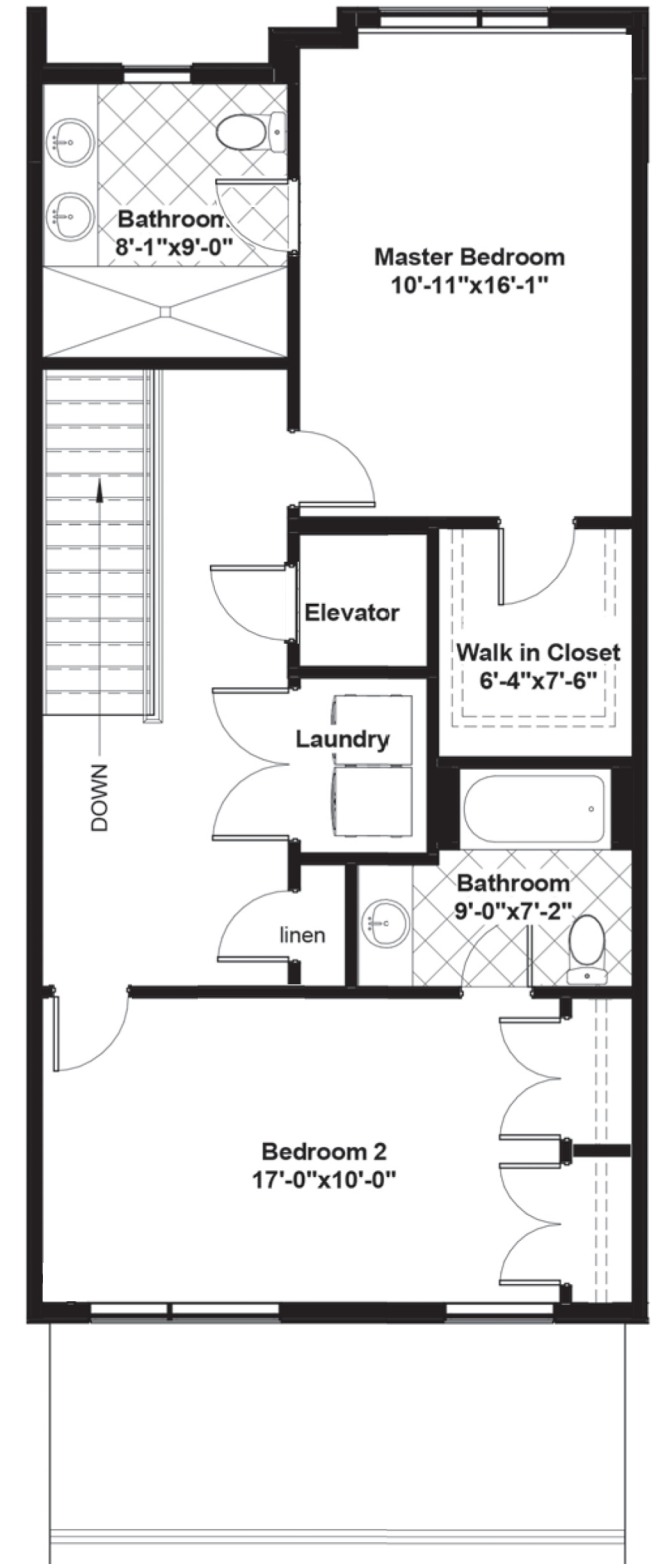


GROUND FLOOR - 475 SF - 9' CEILINGS *

**Den/Office & Bathroom 8' ceilings*



SECOND FLOOR - 801 SF - 9' CEILINGS



THIRD FLOOR - 801 SF - 8' CEILINGS